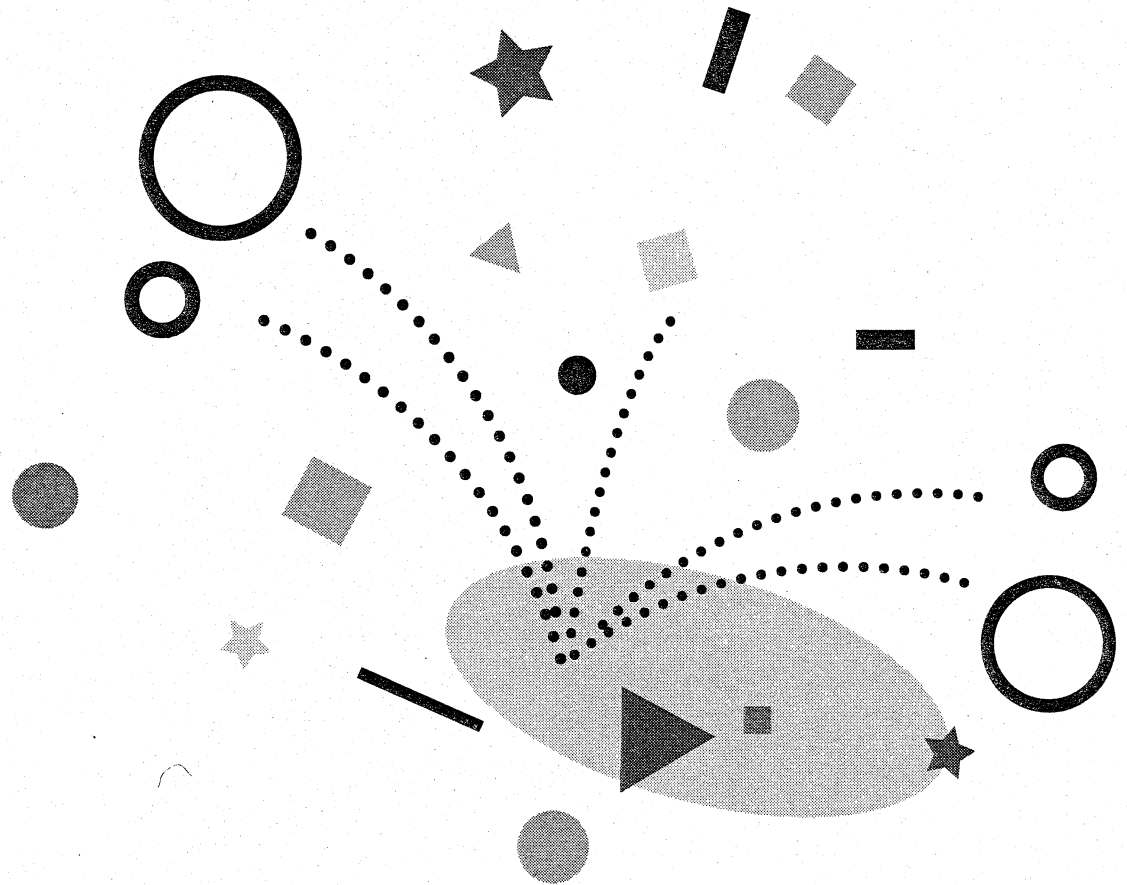


DP-8000

Printer Driver User's Guide



- MS-DOS and Windows are registered trademarks of Microsoft Corp.
- IBM PC/AT is a registered trademark of International Business Machines Corporation.
- i386DX, i386SX, i486DX, i486SX, i486DX2, i486DX4, i486SX2, and Pentium are registered trademarks of Intel Corporation.
- Use of any other corporate or product name should not be regarded as affecting the validity of any trademark or service mark.
- The contents of this User's Guide are subject to change without notice.
- The descriptions and illustrations used in this User's Guide may differ somewhat from the actual appearance of the product being described.
- The contents of this User's Guide are subject to change without notice.
- Note that the manufacturer shall not be held liable for any loss or claims by third parties which may arise out of the use of this product.
- The DP-8000 Printer Driver is a 16-bit application designed for use on a computer running Windows 95 or Windows 3.1 only.
- Except for a back-up copy for your own personal use, making multiple copies of this driver or supplying to third parties is prohibited.
- Do not use the DP-8000 Printer Driver on a computer running Windows NT.
- Certain system configurations can cause misoperation or malfunction of the DP-8000 Printer Driver.
- Using the DP-8000 Printer Driver together with certain applications or hardware may cause the contents of windows and dialog boxes to appear differently from those shown in this User's Guide.

Copyright Notice

No part of this publication may be reproduced, transmitted, transcribed, stored in a retrieval system, or translated into any human or computer language, in any form or by any means, without the express written permission of CASIO COMPUTER CO.,LTD.

Important!

Keep this manual in a safe place for future reference when you need it.

Contents

About this User's Guide.....	E-2
Getting Ready	E-3
Connecting to Your Computer	E-3
Installing the Printer Driver	E-3
Required System Configuration	E-3
Driver Settings	E-6
Opening the DP-8000 Properties Dialog	E-6
DP-8000 Properties Settings	E-6
Paper Settings	E-7
Graphics Settings	E-9
Printing Computer Data	E-10
To print data from your computer	E-10
Error Messages	E-13

Important!

All of the operations in this User's Guide assume that you are already familiar with standard Microsoft Windows operations, including: changing the active drive, clicking, double-clicking, menu bar operations, button operations, selecting options from a list, etc. If you aren't, information about these operations can be found in the documentation that comes with your Windows operating system.

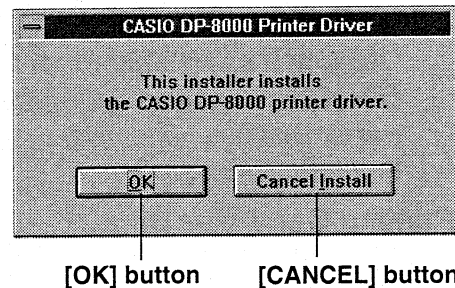
About this User's Guide...

The explanations in this User's Guide all assume use of a mouse. The following describes the various conventions applied in this manual concerning dialog boxes, menus and tabs.

Dialog Box Buttons

A dialog box button is indicated by enclosing the button's text within square brackets.

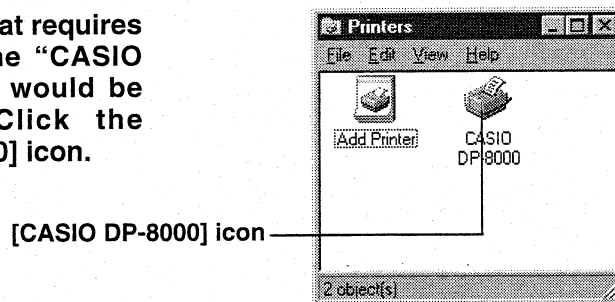
Example: An operation that requires you to click the "OK" button would be written as: Click the [OK] button.



Icons

An on-screen icon is indicated by enclosing the icon's name within square brackets.

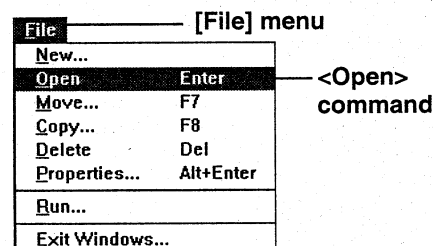
Example: An operation that requires you to click the "CASIO DP-8000" icon would be written as: Click the [CASIO DP-8000] icon.



Menu Commands

Selection of a command from a pull-down menu in the menu bar is indicated with the name of the menu in square brackets, with the name of the selected command in pointed brackets.

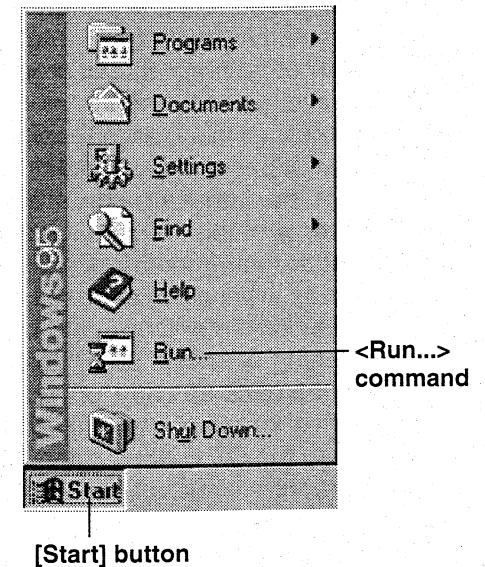
Example: An operation that requires you to pull down the "File" menu to select the "Open" command would be written as: In the menu bar, click [File] and then click <Open>.



Important!

The above pull-down menu conventions also apply to the Windows 95 [Start] menu.

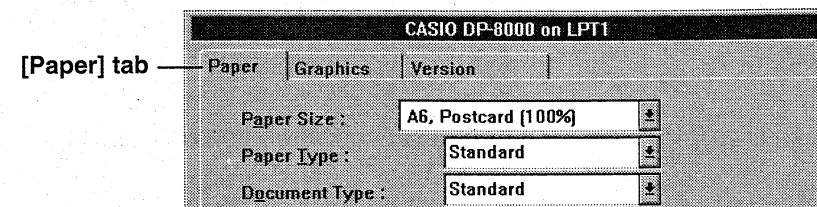
Example: Click the [Start] button and then click <Run...>.



Icons

A tab is indicated by enclosing the tab's name within square brackets.

Example: An operation that requires you to click the "Paper" tab would be written as: Click the [Paper] tab.



Terms

- The term "printer" as used in this manual refers to the CASIO DP-8000 Printer.
- The term "printer driver" as used in this manual refers to the CASIO DP-8000 Printer Driver.

Getting Ready

Before printing data on the printer, you must connect it to your computer and install the printer driver.

Connecting to Your Computer

This section explains how to connect the printer to your computer.

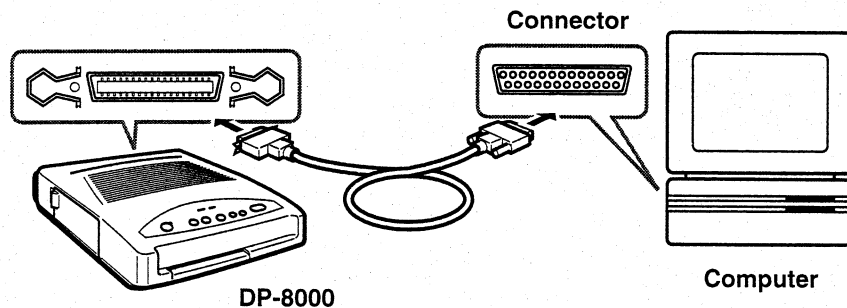
Printer Cable

You need commercially available printer cable to connect the printer to a personal computer. The type of cable you need depends on what kind of computer you have.

- For connection with a IBM PC/AT or compatible machine
25-pin ↔ 36-pin printer cable

To Connect the Printer to Your Computer

1. Turn off the power of the printer and your computer.
2. Connect one end of the printer cable to the printer.
3. Connect the other end of the printer cable to your computer.



The actual configuration of the connector on your personal computer depends on the type of computer you are connecting to.

Installing the Printer Driver

This section describes how to install the printer driver on your computer. Note that the installation procedure for Windows 95 is different from the installation procedure for Windows 3.1.

Once you install a printer driver on a computer, it remains installed until you remove it.

Important!

Before actually beginning installation, take a few moments to check if your hardware and operating system match the items listed under Required System Configuration, below.

Required System Configuration

Your computer hardware and operating system meet the following requirements in order to properly install and run the printer driver.

Computer Type

IBM PC/AT or compatible
25-pin printer connector

Hardware

RAM

- At least 16MB recommended (Depending on the application being used and the data being printed, more memory may be required.)

Hard Disk

- At least 1MB of free space for driver installation.
- At least 12MB of free space for printing (Depending on the data being printed, more memory may be required.)

Operating System

- Microsoft® Windows® 95* English Version or Microsoft® Windows® 3.1 English Version (Enhanced Mode)
* The printer driver has been developed to run under Windows 3.1 (16-bit application), there may be some limitations when running under Windows 95.

Installing Under Windows 95

Use the procedure described below to install the printer driver under Windows 95.

Important!

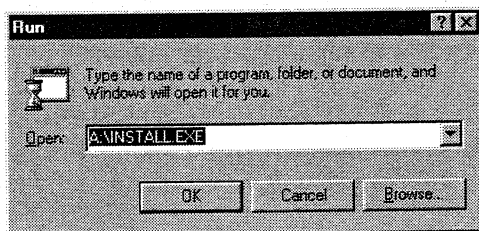
The printer driver is a Windows 3.1 16-bit application that can also run under Windows 95. It does not support plug and play (PNP).

To start printer driver installation under Windows 95:

Example: To install the printer driver onto hard disk C: from the diskette in drive A:

1. Start up Windows 95.
- See the manual that comes with Windows 95 for information about starting it up.

2. Insert the diskette labelled "DP-8000 Printer Driver" into your computer's disk drive (Drive A: in this example).
3. Click the [Start] button and then click <Run...>.
4. Type the following into the text box:
A:\INSTALL.EXE
- You can use either upper-case or lower-case letters.



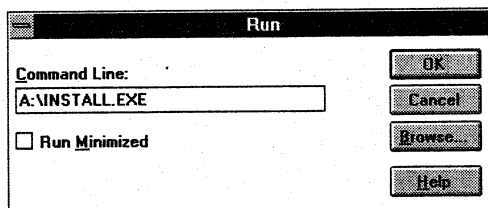
5. Perform the steps under "Installing the Printer Driver" on this page.

Installing Under Windows 3.1

Use the procedure described below to install the printer driver under Windows 3.1.

To install the printer driver under Windows 3.1:

1. Start up Windows 3.1.
 - See the manual that comes with Windows 3.1 for information about starting it up.
2. Insert the diskette labelled "DP-8000 Printer Driver" into your computer's disk drive.
3. In the Program Manager's menu bar, click File and then click <Run...>.
4. Type the following into the text box:
A:\INSTALL.EXE
- You can use either upper-case or lower-case letters.



5. Perform the steps under "Installing the Printer Driver" below.

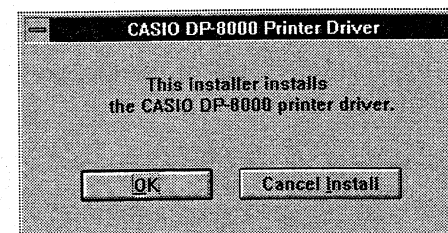
If the install routine is interrupted...

The printer driver is not installed correctly. Start again from the beginning to re-install the driver.

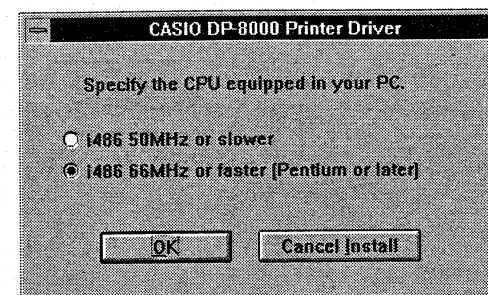
Installing the Printer Driver

Perform the following steps only after completing either "To start printer driver installation under Windows 95" on page E-3 or "To start printer driver installation under Windows 3.1" on this page.

1. Click the [OK] button.

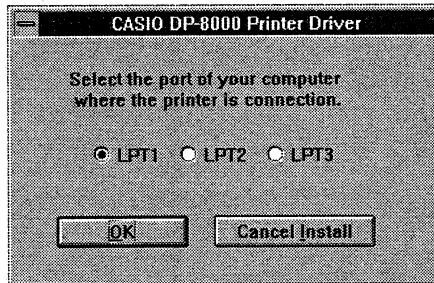


2. Click the [OK] button.



3. Click on the selection that corresponds to your computer's CPU.
 - See the documentation that comes with your computer for details about its CPU. If your computer has a i80486 50MHz CPU or lower, the resolution is automatically set to standard.
 - See "[Resolution]" on page E-8 for details about resolution.

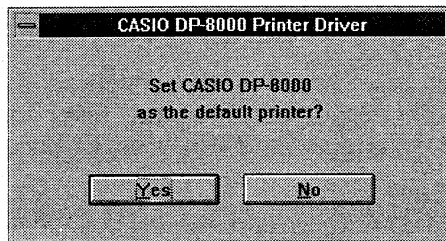
4. Click the [OK] button.



5. Specify the port where the DP-8000 is connected to your computer.

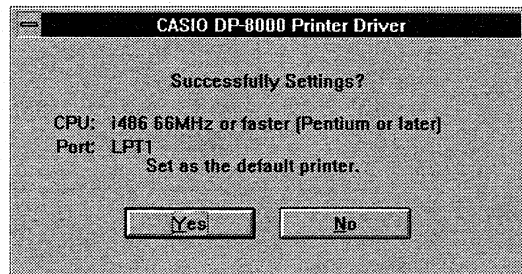
- See the documentation that comes with your computer for details about its ports. If your printer is equipped with only a single Centronics printer port, you can normally leave this setting at LPT1 and go straight on to step 6 without doing anything.

6. Click [OK].



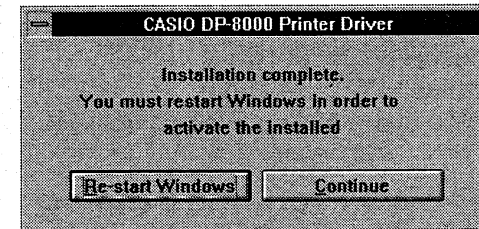
7. Click [Yes] if you want the DP-8000 to be your default printer, or [No] if you do not.

- The printer and paper settings you make with your applications are automatically applied to the default printer.



8. After checking the contents of the dialog box, click [Yes].

- Clicking [No] returns you to step 3 so you can make changes in the settings.
- The display does not change for a few seconds as the installation program makes the necessary settings. The following dialog box appears after it is finished.



9. Remove the printer driver diskette from the disk drive.

10. Click the [Re-start Windows] button.

- You will be able to print with the DP-8000 immediately after Windows restarts.
- If you click the [Continue] button, you will not be able to use the DP-8000 until the next time you start up Windows.

Driver Settings

This section tells you how to display the DP-8000 Properties dialog and the settings that are available in the dialog.

Important!

- The DP-8000 Printer and printer driver can be used with a computer running Windows 95 or Windows 3.1 only.
- All printing is performed on A6 size paper.
- The driver settings you make remain in effect until you change them.

Opening the DP-8000 Properties Dialog

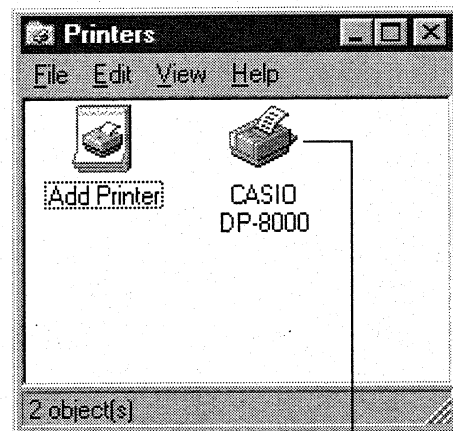
The method you should use to open the DP-8000 Properties dialog depends on whether you are using Windows 95 or Windows 3.1.

To Open the DP-8000 Properties Dialog Using Windows 95

Note

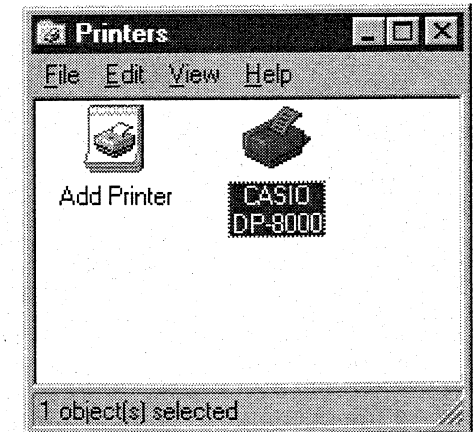
Depending on how you have your system configured, the method you should use to open the DP-8000 Properties Dialog may differ somewhat from that described below. See your computer and Windows 95 documentation for details.

1. Double-click the [My Computer] icon.
2. Double-click the [Printers] icon.



[CASIO DP-8000] icon

3. Click the [CASIO DP-8000] icon.



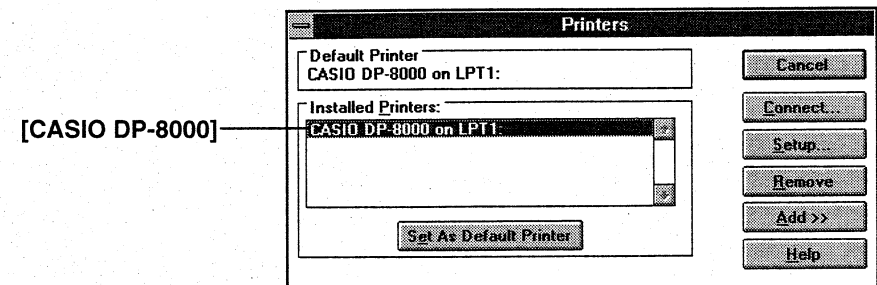
4. In the menu bar, click [File] and then click <Properties>.
5. Click the [Details] tab.
6. Click the [Setup...] button.

To Open the DP-8000 Properties Dialog Using Windows 3.1

Note

Depending on how you have your system configured, the method you should use to open the DP-8000 Properties dialog may differ somewhat from that described below. See your computer and Windows 3.1 documentation for details.

1. Double-click the [Main] icon.
2. Double-click the [Print Manger] icon.
3. In the menu bar, click [Options] and then click <Printer Setup...>.
4. Click the [CASIO DP-8000].



5. Click the [Setup...] button.

DP-8000 Properties Settings

This section describes the settings that you can make using the DP-8000 Properties dialog.

Common Buttons

The following buttons are common to all or most of the tabs.

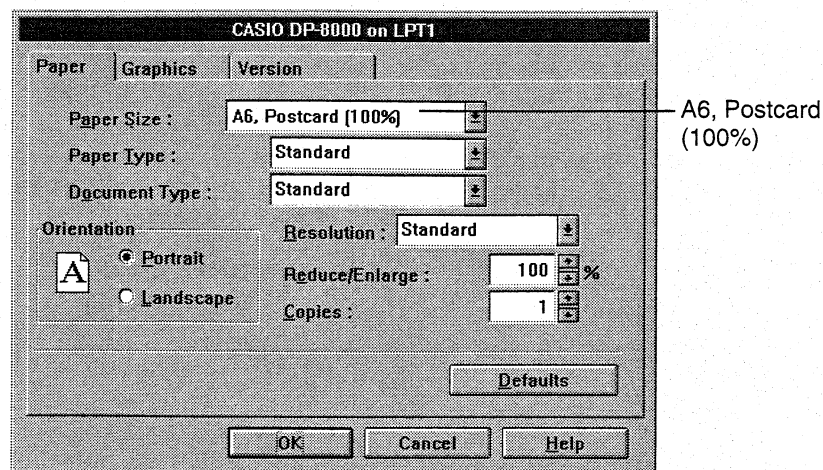
Button	Function
[OK]	Click this button to send all the settings you have made to the printer, and close the DP-8000 Properties dialog.
[Cancel]	Click this button to close the DP-8000 Properties dialog, without sending anything to the printer.
[Help]	Click this button to display on-line help.
[Defaults]	Click this button to display all the settings of the current tab to their standard defaults. Note that this button does not appear in the [Version] tab.

Note:

This printer driver does not use Print Manager, so it does not support background printing or network printing. Also note that the settings you make with Print Manager do not affect printing with this printer driver.

Paper Settings

Click the [Paper] tab to display the paper settings.

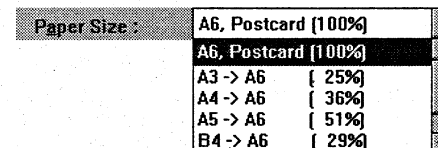


The following describes the settings available on this tab.

[Paper Size]

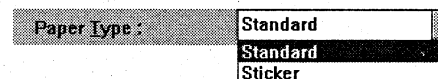
Click the arrow to display a list of available paper sizes, and then click the size you want to select.

→ See page E-9 "Paper Size and the [Reduce/Enlarge] Setting" for other information.



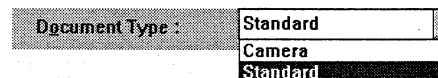
[Paper Type]

Click the arrow to display a list of available paper types. Select [Standard] to print on optional QS-101 or QS-102 paper, [Sticker] to print on optional QS-201 or QS-202 sticker paper.



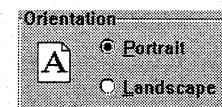
[Document Type]

Click the arrow to display a list of available document types. Use [Standard] for most printing jobs. [Camera] can produce better results when printing an image from a digital camera.



[Orientation]

Select the orientation by clicking either [Portrait] (short side up) or [Landscape] (long side up).





[Resolution]

If you specified “i80486 or lower” as your computer’s CPU when installing the driver, this setting is automatically set to “Standard,” and you do not need to change it.

With a i80486 66MHz or higher, Pentium or higher CPU, click the arrow to display a list of available resolutions. [Standard] prints at 150 dpi, while [High Resolution] prints at about 300 dpi. Note that [High Resolution] printing is slower than [Standard] printing.

→ See “Setting the Resolution from an Application” on page E-12.



[Reduce/Enlarge]

You can specify a value within the range of 25% (minimum reduction) to 200% (maximum enlargement). Click the  arrow to increase the displayed value or the  arrow to decrease it. Holding down either button changes the value at high speed. You can also use the mouse to select the value in this text box and input a new value from your computer keyboard.

→ See page E-9 “Paper Size and the [Reduce/Enlarge] Setting” for other information.



[Copies]

You can specify printing of any number of copies within the range of 1 to 25. Click the  arrow to increase the displayed value or the  arrow to decrease it. Holding down either button changes the value at high speed. You can also use the mouse to select the value in this text box and input a new value from your computer keyboard.

If you specify two or more copies, all of the copies of the first page are printed, followed by all of the copies of the second page, and so on.

Example: Printing two copies of a two-page document

First Print: Page 1 Second Print: Page 1
Third Print: Page 2 Fourth Print: Page 2



If your application also allows you to specify the number of copies, leave the application’s setting at 1. Setting another value with the application can cause the number of copies specified with the printer driver to be multiplied by the number of copies specified by the application.

Example:

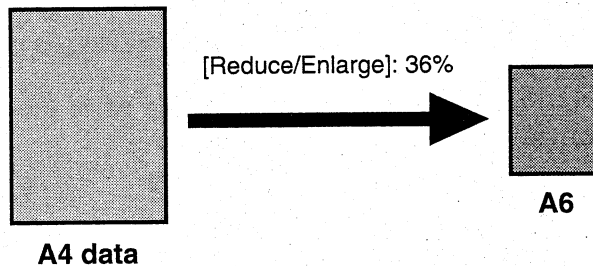
Number of copies set with printer driver: 4
Number of copies set with application: 3
→ Number of copies printed: 12 (3 × 4)

The number of copies produced when using some applications may be different from that described above. See the documentation that comes with your application for details.

Paper Size and the [Reduce/Enlarge] Setting

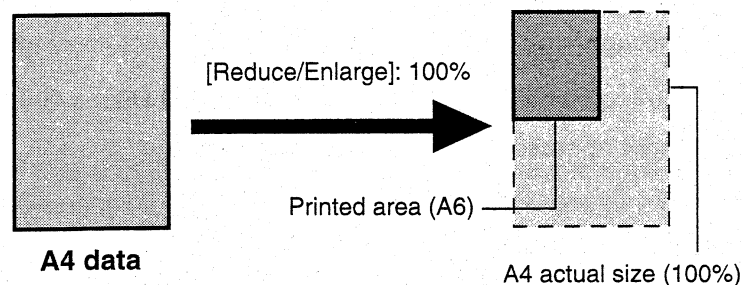
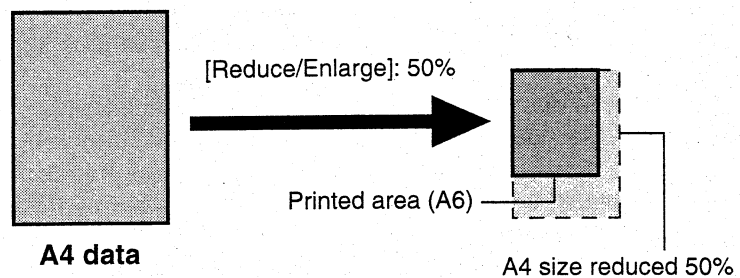
The DP-8000 can print on A6 size paper. If you select any other paper size, the DP-8000 automatically sets the [Reduce/Enlarge] value to fit.

Example



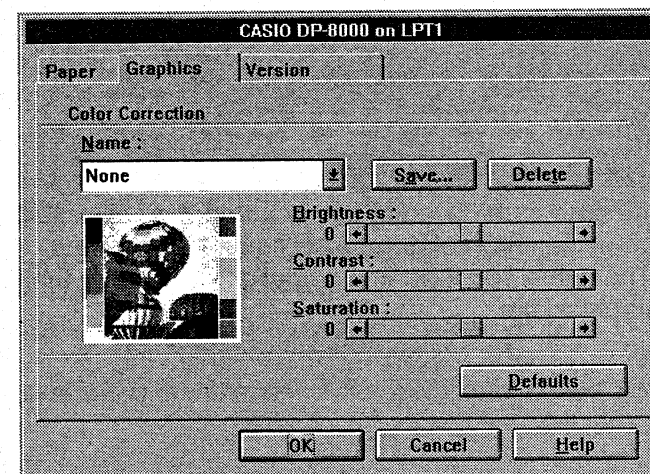
If you change the automatically set value to a larger value, the portion of the original that can fit within the A6 area only is printed.

Examples



Graphics Settings

Click the [Graphics] tab to display the graphics settings.



Sample graphic

The following describes the settings available on this tab.

[Name]

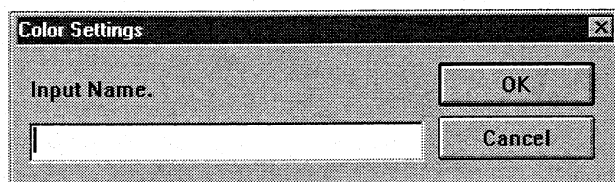
This text box shows the name of the current graphics settings. Click the arrow to display a list of graphics settings that you previously saved using the [Save..] button. Selecting a name immediately changes all of the settings in the [Graphics] tab to the ones contained in the file you select.

[Save...]

Use this text box to specify a name for saving graphics settings, or for recalling previously saved graphics settings.

[Save...]

Click this button to display the [Color Settings] dialog box.



Input a name in the [Name] text box and then click [OK] to save the settings under the name. A setup name can be up to 16 characters long. The name you input is automatically added to the [Name] list of the [Graphics] tab.

[Delete]

Click this button to delete the file whose name is currently displayed in the [Name] list.

[Brightness]

Use this slider to adjust the brightness. Any change you make is immediately reflected in the sample graphic.

[Contrast]

Use this slider to adjust the contrast. Any change you make is immediately reflected in the sample graphic.

[Saturation]

Use this slider to adjust the color saturation. Any change you make is immediately reflected in the sample graphic.

Sample Graphic

The sample graphic gives you an idea of how the [Brightness], [Contrast], and [Saturation] settings will effect your graphics. You can use the default graphic or you can change to any other graphic you have on file. Double click on the sample graphic to display a bit map file (illustration file) selection dialog box. Select the graphic file you want to use and then click the [OK] button.

Version

Click this tab to view version information about the printer driver.

Printing Computer Data

After you connect the printer to your computer (page E-3) and install the printer driver (page E-3), you are ready to actually print data from your computer.

Important!

- Check to make sure that an ink cartridge is loaded in the printer before you start a print operation. See the DP-8000 User's Guide for details on loading an ink cartridge.
- Note that operation of the printer's buttons is disabled while the printer is connected to your computer.

To Print Data from Your Computer

1. Create the data you want to print on your computer.

→ See "Paper Size and the [Reduce/Enlarge] Setting" on page E-9 for information on data size and paper size.

Preview

The Preview feature let's you view what your printout will look like before you actually print it.

- The print preview is displayed when the [Preview] check box is checked.
- The print preview is not displayed when the [Preview] check box is not checked.
- Click on the [Preview] check box to check and uncheck it.
- If your print job has more than one page, use the scroll box to preview other pages.

2. Turn on the DP-8000.

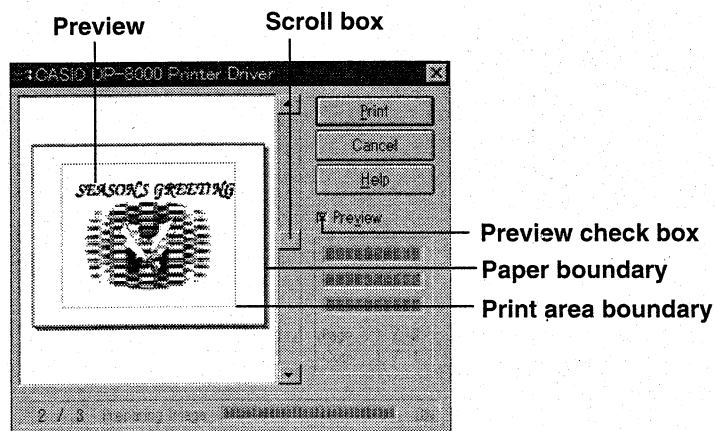
→ See "Turning Power On and Off" of the DP-8000 User's Guide.

3. Perform the print operation from the application.

Important!

Be sure that [CASIO DP-8000] is selected as the printer.

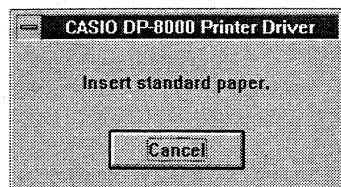
- See your application's and Windows documentation for details about performing the print operation.



With some video boards, number of colors settings (256, 32,000, 65,000, 16,700,000) can result in failure of the preview display to appear. If this happens, try changing to another setting. See the documentation that comes with your computer or video board for details about video boards.

4. Click the [Print] button to print.

- To cancel the print operation, click [Cancel].



- The text that appears in the above dialog box depends on whether you selected [Standard Paper] or [Sticker Paper] as the paper type under "Paper Settings" on page E-7.

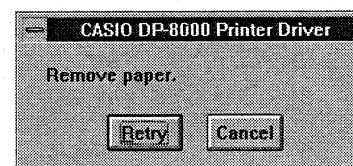
5. Insert the type of paper specified in the dialog box that appears in step 4.

- Printing starts when paper is inserted.
- If you are printing a single page, proceed to "Single Page Printing".
- If you are printing two or more pages, proceed to "Multiple Page Printing".

→ See "Inserting Paper Into the Printer" of the DP-8000 User's Guide.

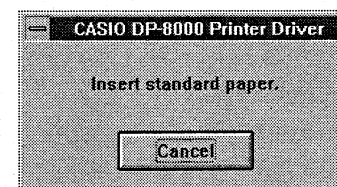
If you insert paper into the printer before being prompted...

The following dialog box appears if you insert paper into the printer before prompted to do so in step 4, above.



When this happens, perform the following procedure.

- ① Pull out the paper.
- ② Click the [Retry] button.



- ③ Insert paper into the DP-8000.

Single Page Printing

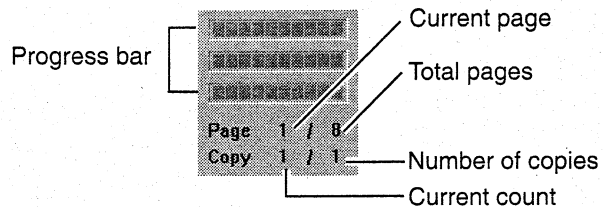
6. Pull the paper from the printer to complete the procedure.

When printing large amounts of data...

The DP-8000 can print on A6 size paper. See "Paper Size and the [Reduce/Enlarge] Setting" on page E-9 for details on what happens when the data is larger than the paper size. Paper sizes you can set differ according to the application you are using. See the documentation that comes with your application for details.

Print Progress Display

The color of the progress bar changes as data is sent to the DP-8000.



Setting the Resolution from an Application

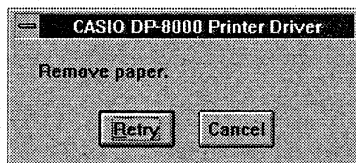
The DP-8000 resolution can be set as [Standard] (150dpi) or [High Resolution] (approximately 300 dpi). Some applications allow setting of resolutions up to 900dpi. When a resolution greater than 300dpi is set with the application, the DP-8000 automatically prints at 300dpi.

Interrupting a Print Operation

A print operation cannot be interrupted after paper is inserted into the printer. To interrupt a multiple page print operation, click the [Cancel] button in the dialog box.

Multiple Page Printing

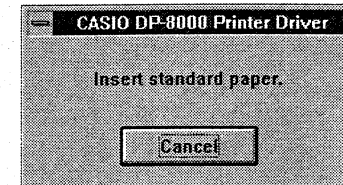
The following dialog box appears after printing of the current sheet of paper is complete.



Note

If you pull the paper from the printer before this dialog box has a chance to be displayed, the dialog box does not appear at all, and the "Insert Standard Paper" dialog box appears instead. When this happens, proceed to step 8.

6. Pull the paper from the printer.
7. Click the [Retry] button.



8. Insert another sheet of paper into the printer.
 - Printing starts when paper is inserted.
9. Repeat steps 6 through 8 until all pages are printed.

Multiple Copy Printing

If you specify two or more copies, all of the copies of the first page are printed, followed by all of the copies of the second page, and so on.

Example: Printing two copies of a two-page document

First Print: Page 1 Second Print: Page 1
Third Print: Page 2 Fourth Print: Page 2

Error Messages

The following shows all of the buttons associate with each error message. Note, however, that under certain conditions all of the buttons associated with an error message may not appear along with it.

Message	Buttons
Insert (standard paper/sticker paper)*.	[Stop]: Stops printing [Retry]: Tries to print again
Could not print due to abnormal RAW data. RAW data file contents may be damaged. Run CHECK DISK or perform other diagnostic procedures and try printing again.	[OK]: Stops printing
Could not print due to abnormal RAW data file. RAW data file contents may be damaged. Run CHECK DISK or perform other diagnostic procedures and try printing again.	[OK]: Stops printing
Ink cartridge problem Remove the ink cartridge from the printer and check for abnormalities. (improper winding, damage, etc.)	[OK]: Stops printing
Ink ribbon is not loaded or is loaded incorrectly. Check ink cartridge and load correctly.	[Retry]: Tries to print again [Cancel]: Stops printing [OK]: Stops printing
Ink cartridge is used up. Replace with a new one.	[Retry]: Tries to print again [Cancel]: Stops printing
Wrong ink cartridge type. Incorrect type of ink cartridge is loaded. Replace it with the correct type.	[OK]: Stops printing
Ink cartridge compartment cover is open. Close it securely.	[Retry]: Tries to print again [Cancel]: Stops printing [OK]: Stops printing
Bottom cover is open. Close it securely.	[Retry]: Tries to print again [Cancel]: Stops printing [OK]: Stops printing

Message	Buttons
Paper jam Paper is caught inside printing mechanism. Open the bottom cover and remove the paper.	[OK]: Stops printing
Mechanical malfunction Printer is malfunctioning. Contact your service provider for repair.	[OK]: Stops printing
Wrong paper type is inserted. Inserted paper is not compatible with loaded ink cartridge. Load paper that is compatible with ink cartridge.	[OK]: Stops printing
Could not print due to insufficient disk space. Make more disk space available and try printing again.	[OK]: Stops printing
Data transfer taking too much time.	[OK]: Stops printing
Printer not connected.	[Retry]: Tries to print again [Cancel]: Stops printing
Printer is overheating.	[OK]: Stops printing
Printer error	[OK]: Stops printing
Mechanical problem Open the bottom cover and check if paper is caught inside printing mechanism, etc.	[OK]: Stops printing
Printer is malfunctioning. Contact your dealer for repair.	[OK]: Stops printing
Preview cannot be displayed due to insufficient memory.	[OK]: Stops displaying the preview
Could not print due to insufficient memory. Quit other applications and try printing again.	[OK]: Stops printing
Remove paper.	[Retry]: Tries to print again [Cancel]: Stops printing
Could not print due to insufficient resources. Quit other applications and try printing again.	[OK]: Stops printing

Computer Data Printing Precautions

Most abnormalities that occur when trying to print computer data on the DP-8000 are due to application setting problems. Because of this you should always set up your application in accordance with the procedures described in the documentation that comes with it.

The following describes some typical problems and their solutions for a number of selected software applications.

CASIO QV Digital Camera PC Link Software

Wrong printed image size

1. In QV-Link, click [File (F)] and then select <Preferences (F)>.
2. Click the [Print Setup] and select <Fit image to paper size>.
3. Click the [Clip data] tab and select [Full color].
4. Click [OK].

Poor Color quality

- This problem can occur when the computer being used is set up for 256 colors. Change to 16-bit (Hi color) or 32-bit (True color) and try printing again.

Graphic Software

Adobe Photoshop

Problems with printing graphic data can be caused when the number of graphic pixel and the resolution does not match the print size. The following are recommended number of pixel and resolution settings.

Standard Resolution Printing

Width: 480 pixels, Height: 640 pixels

Resolution: 150 pixels/inch, Orientation: Portrait

Width: 640 pixels, Height: 480 pixels

Resolution: 150 pixels/inch, Orientation: Landscape

High Resolution Printing

Width: 960 pixels, Height: 1280 pixels

Resolution: 300 pixels/inch, Orientation: Portrait

Width: 1280 pixels, Height: 960 pixels

Resolution: 300 pixels/inch, Orientation: Landscape

- Take special note of the units used for the above. The size will not match if you use "cm" or "pixels/cm".
- Actual setting can be made with [Image]-[Image Size].

If printing is performed in monochrome

Use of some application may result in printing being performed in monochrome. Whenever this happens, open the DP-8000 printer driver's paper setting dialog box and set the resolution to <Standard>. See page 7 of the DP-8000 printer driver manual for details on how to do this. What you should do next depends on whether or not the application you are using support BMP file saves.

Application supports BMP file saves

1. Save the data as a BMP file.
2. Try printing the BMP file.
 - See the user documentation that comes with the application for details on how to save data as a BMP file.

Application does not support BMP file saves

1. Select the range of data being printed in monochrome.
2. Click [Edit] and then select [Copy].
3. Start up the [Paint] accessory that comes with Windows, and execute the [Paste] command from its [Edit] menu to paste the data into the Paint window.
4. Recopy the data from the Paint window, and paste it back into the desired location in the original application.

Important!

- Note that the above procedure cannot be performed when running under Windows 3.1.

Other Precautions

- The DP-8000 driver does not support background printing.
- The DP-8000 does not support operation in a network environment.

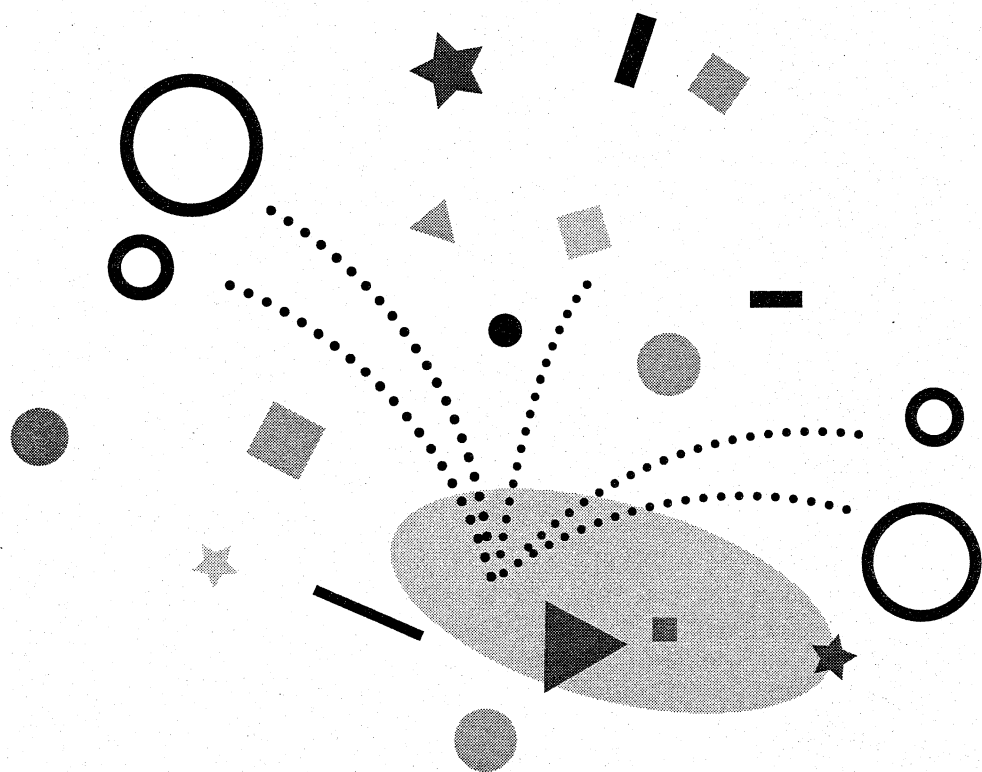
DP-8000

User's Guide
Guía del usuario
Mode d'emploi

English

Español

Français



ESF

CASIO®

Important Safety Precautions

Note the following safety precautions before using the DP-8000 for the first time. Keep these safety precautions and operating instructions on hand for future reference.

About safety precaution symbols

The following symbols are used in this manual and on the product itself to alert you and others to the risk of personal and material injury.



Warning

This symbol indicates an item that can result in death or serious personal injury if ignored.



Caution

This symbol indicates an item that can result in serious personal injury or material damage if ignored.

Examples



- A triangle indicates something you should be careful about. This symbol warns against electrical shock.



- A circle indicates something you should not do. This symbol indicates you should not try to take something apart.



- A black circle indicates something you must do. This symbol indicates you should unplug something.



Warning

Serious malfunction



- Continued use of the printer when smoke or a strange odor is coming from it creates the danger of electrical shock. Immediately turn power off and unplug the power cord of the AC adaptor from the wall outlet. Request servicing from your original dealer.

AC adaptor



- Use only a power source whose voltage matches the rating marked on the AC adaptor. Also, avoid plugging too many appliances into the same extension cord. The wrong voltage or overloading of an AC outlet creates the danger of fire and electrical shock.



- Use only the AC adaptor specified for the printer. Use of another AC adaptor can cause the insulation of the adaptor's power cord to melt, creating the danger of fire and electrical shock.



- Do not allow the power cord to become damaged or broken, never place heavy objects on the power cord, and never expose it to direct heat. A damaged power cord creates the danger of fire and electrical shock.



- Should the power cord become seriously damaged (internal wiring is exposed or cut), request servicing from your original dealer. Use of a seriously damaged power cord creates the danger of fire and electrical shock.



- Never modify, over bend, twist, or pull the power cord. Doing so creates the danger of fire and electrical shock.



- Never touch the electrical plug of the AC adaptor when your hands are wet. Doing so creates the danger of electrical shock.

Avoid dropping



- Should the printer ever become damaged due to dropping it, immediately turn off power and unplug the power cord from the wall socket. Request servicing from your original dealer. Use of a damaged printer creates the danger of fire and electrical shock.

Packaging



- Keep the plastic bag that the printer comes in out of the reach of small children. Plastic bags create the danger of suffocation for small children.

Never try to take the printer apart



- Never try to take the printer apart or modify it in any way. Doing so creates the danger of electrical shock, burn injury, or other personal injury.



Caution

AC Adaptor



- Do not leave the power cord near stoves or other sources of intense heat. Doing so can melt power cord insulation and create the danger of fire and electrical shock.



- When unplugging the power cord from the wall socket, grasp the plug. Never pull on the cord itself. Doing so can damage the power cord and create the danger of fire and electrical shock.



- Whenever leaving the printer unattended for long periods, be sure to unplug it from the wall socket.



- Whenever moving the printer, be sure to unplug it from the wall socket. Leaving the printer plugged in when it is being moved can result in damage to the power cord and create the danger of fire and electrical shock.



- Whenever cleaning the printer, be sure to unplug it from the wall socket.



- When you are through using the printer, turn it off and unplug it from the wall socket.

Water and other foreign matter



- Never allow coffee, juice, or other drinks, or flower vases to spill on the printer. Liquid spilled on the printer creates the danger of fire and electrical shock. Should liquid ever spill onto the printer, immediately turn off power and unplug the power cord from the wall socket. Request servicing from your original dealer.

Location



- Never place heavy objects on the printer. Doing so creates the danger of it falling off, resulting in personal injury.



- Avoid leaving the printer in areas subjected to high humidity and large amounts of dust. Such conditions create the danger of fire and electrical shock.



- Avoid leaving the printer on a kitchen table, next to a humidifier, or in any other area where it might come into contact with oil vapors or steam. Such conditions create the danger of fire and electrical shock.

Avoid unstable areas



- Never place the printer on an unstable table or a high shelf. Doing so can cause it to fall, resulting in personal injury.

NOTICE

This equipment has been tested and found to comply with the limits for a Class B digital device, pursuant to Part 15 of the FCC Rules. These limits are designed to provide reasonable protection against harmful interference in a residential installation. This equipment generates, uses and can radiate radio frequency energy and, if not installed and used in accordance with the instructions, may cause harmful interference to radio communications. However, there is no guarantee that interference will not occur in a particular installation. If this equipment does cause harmful interference to radio or television reception, which can be determined by turning the equipment off and on, the user is encouraged to try to correct the interference by one or more of the following measures:

- Reorient or relocate the receiving antenna.
- Increase the separation between the equipment and receiver.
- Connect the equipment into an outlet on a circuit different from that to which the receiver is connected.
- Consult the dealer or an experienced radio/TV technician for help.

FCC WARNING

Changes or modifications not expressly approved by the party responsible for compliance could void the user's authority to operate the equipment. Proper connectors must be used for connection to host computer and/or peripherals in order to meet FCC emission limits.

Connector SB-62 QV Digital Camera to DIGITAL PHOTO PRINTER Unit



CASIO ELECTRONICS CO., LTD.
Unit 6, 1000 North Circular Road,
London NW2 7JD. U.K.

Operational Precautions

- Never place heavy objects on top of the printer. Doing so creates the danger of overheating and malfunction.
- Do not allow the vent holes on top, back, or bottom of the printer to become blocked. Doing so creates the danger of overheating and malfunction.
- Avoid using the printer in areas subjected to high temperatures and humidity, and large amounts of dust.

Paper Precautions

- Handle paper carefully. Bent or curled leading edges can result in paper jams.
- Do not touch the printing surface of the paper or allow it to become scratched. Damaged paper can result in defective printing.

Storing Prints

- Certain environmental conditions can cause prints to deteriorate over time. Always keep back-up digital copies of all images so you can print them again if necessary.

Important!

- Contact a nearby dealer whenever you require servicing.
- Note that the manufacturer shall not be held liable for any loss or claims by third parties which may arise out of the use of this product.
- Note that the manufacturer shall not be held liable for any damages incurred as a result of data loss caused by malfunctions, repairs, or interruption of power supply.
- It is up to the user to keep backup records of important data.
- keep this manual on hand for future reference.

Contents

About this User's Guide	E-4
About the DP-8000	E-4
DP-8000 Features and Functions	E-5
General Guide	E-6
Unpacking	E-6
Loading an Ink Cartridge	E-7
Connecting to a QV Digital Camera	E-8
Turning Power On and Off	E-8
Menu Operations	E-9
Inserting Paper Into the Printer	E-9
Paper	E-10
Print Strage Precautions	E-10
Easy Printing	E-10
Layout Printting	E-12
Calendar Printing	E-13
Postcard Printing	E-14
Mini Printing	E-15
Collage Printing	E-16
Index Printing	E-16
Troubleshooting	E-17
Clearing a Paper Jam	E-18
Error Messages	E-19
User Maintenance	E-19
Patterns	E-20
Specifications	E-22
Options	E-22

About this User's Guide

Buttons and menu items

- Button operations are indicated with square brackets, like: [SET], [-], [+].
- On screen menu item text is also enclosed inside square brackets, like: [LAYOUT], [COLLAGE].

Example: Use [-] and [+] to select [LAYOUT].

QV-10, QV-10A, QV-11 and QV-30 Operations

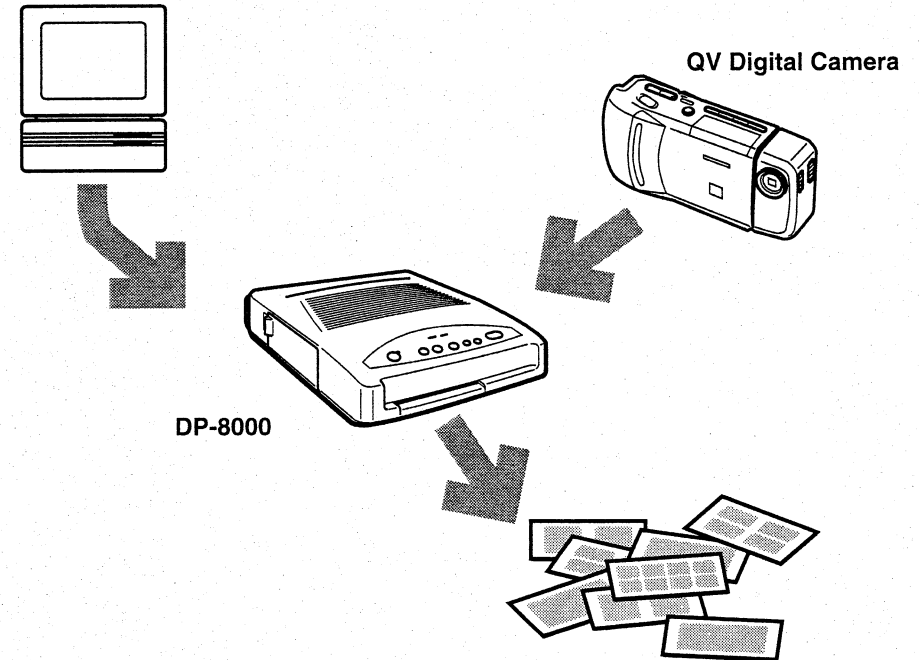
This User's Guide describes operations based on a QV-100/QV-120/QV-300 QV Digital Camera. Different procedures and display screens that apply to the QV-10, QV-10A, QV-11 and QV-30 QV Digital Cameras are indicated as shown below.

QV-10, QV-10A, QV-11, QV-30

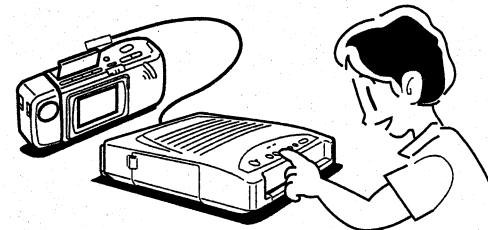
About the DP-8000

The DP-8000 is a sublimation thermal printer that prints QV Digital Camera image data (images stored in camera memory) and personal computer data.

Personal computer



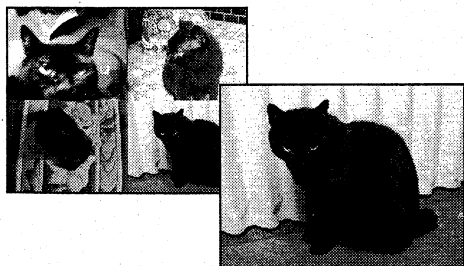
- This User's Guide does not cover printing of personal computer data. See the "Printer Driver User's Guide" that comes with the printer driver for details on printing personal computer data.



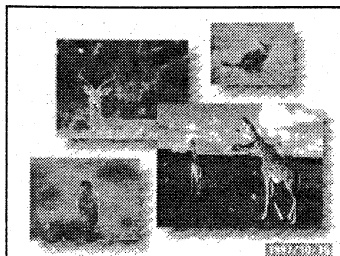
You can also incorporate QV Digital images into a variety of preset patterns while monitoring the results on the monitor screen of your QV Digital Camera.

DP-8000 Features and Functions

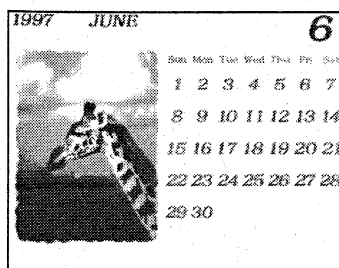
The DP-8000 Printer lets you incorporate the digital images of your QV Digital Camera into a variety of different layouts and formats for printing.



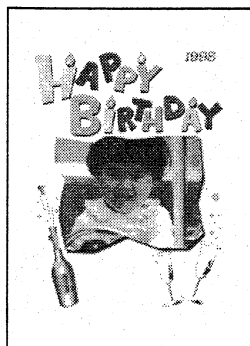
Easy Printing < Page E-10>
Print QV Digital Camera images as they are, without changing them.



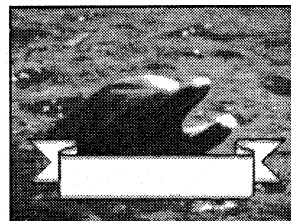
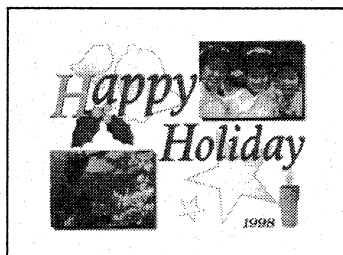
Layout Printing < Page E-12>
Incorporate images into one of 18 different pre-set layouts.



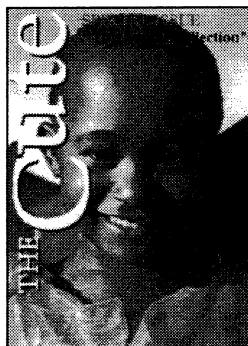
Calendar Printing < Page E-13>
Use your favorite images in one of four different calendar formats.



Post Card Printing < Page E-14>
Quick and easy original postcards using one of eight formats.



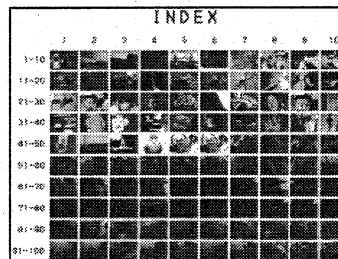
Mini Printing < Page E-15>
Select one of 12 different layouts to produce mini stickers.
Sticker printing requires separately available 16-image sticker paper.



Collage Printing < Page E-16>
Combine your images with one of four different illustrations.

Prints that are fun for everyone!

* Text can be added with an oil-based pen after printing.

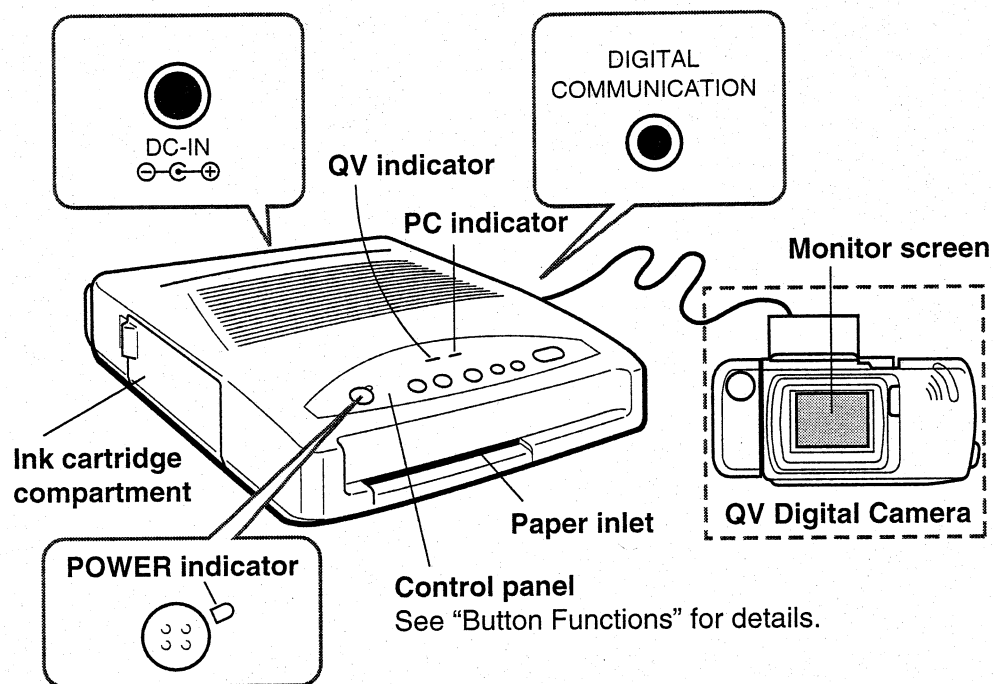


Index Printing < Page E-16>
Print an index that shows thumbnails of all images stored in QV Digital Camera memory.

Personal Computer Data Printing

The DP-8000 can be used to print data from a personal computer. This User's Guide does not cover printing of personal computer data. See the "Printer Driver User's Guide" that comes with the printer driver for details on printing personal computer data.

General Guide



Unpacking

Check that all the items shown below are included when unpacking the printer after you purchase it. If anything is missing, contact the dealer where you purchased the printer as soon as possible.

- AC Adaptor (AD-2418)
- Communication Cable (SB-62) (For QV Digital Camera connection)
- Ink Cartridge
- Special Paper
- Floppy Diskette (Includes printer driver for Windows.)
- Printer Driver User's Guide
- Printer User's Guide (this manual)
- Print Samples

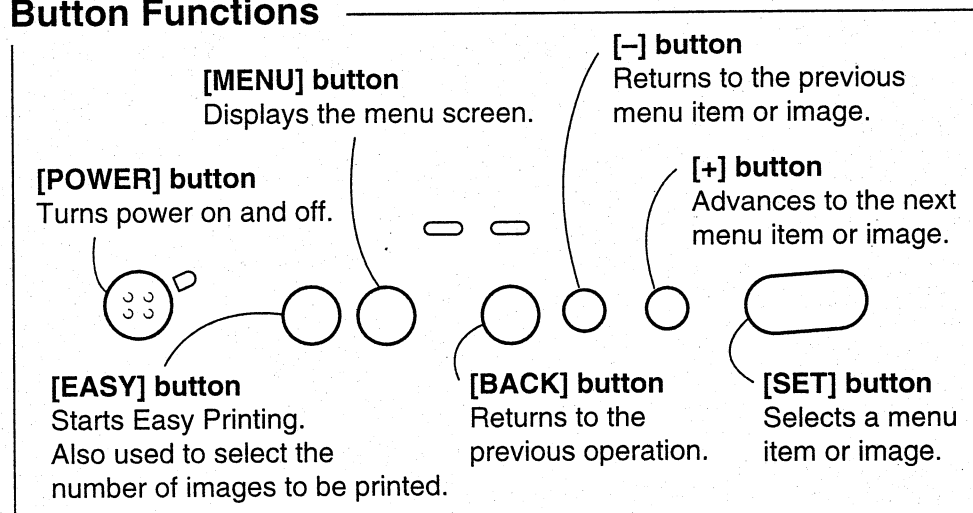
Printer Driver

Use the printer driver on the floppy diskette to print personal computer data.

Ink Cartridge and Paper

Ink cartridges and paper are separately available as options.

Button Functions



Loading an Ink Cartridge

You must load an ink cartridge into the printer before using it for the first time. To replace an existing ink cartridge with a new one, first remove the old cartridge using the procedure under "To remove the ink cartridge", and then install the new cartridge using the procedure shown below.



Caution

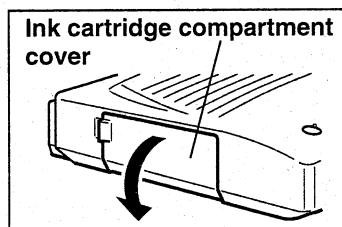
High Temperature



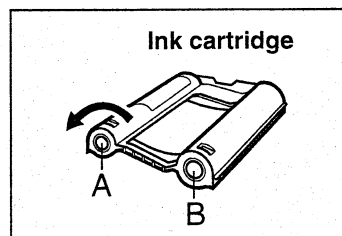
- Never insert your hand into the ink cartridge compartment when installing or replacing the ink cartridge. The inside of the printer may be hot immediately after it is used for printing.

To load an ink cartridge

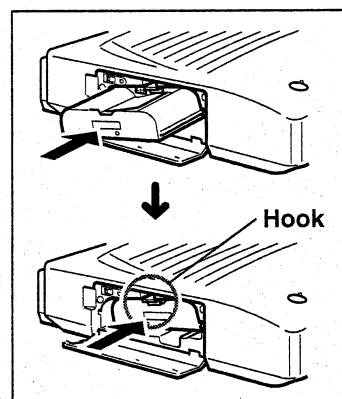
1. Open the ink cartridge compartment cover.



2. Before loading the ink cartridge, take up any slack by rotating A in the direction indicated by the arrow while using your finger to keep B from rotating.

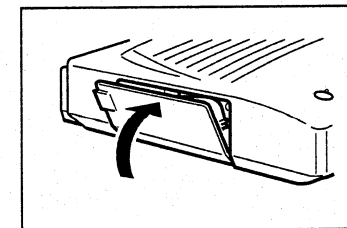


3. Insert the ink cartridge into the compartment as far as it will go. Make sure the ink sheet does not become twisted.



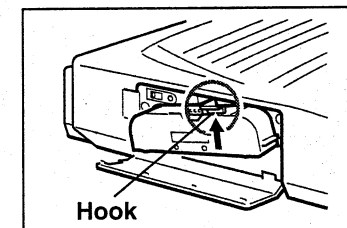
Press the ink cartridge until it locks into place with an audible click.

4. Close the ink cartridge compartment cover.



To remove the ink cartridge

Open the ink cartridge compartment cover. Next, pressing up on the hook, pull the ink cartridge straight out of the printer.



Ink Cartridge Installation and Removal Precautions

- Use only the ink cartridges specified for use with this printer.
- Never touch or pull out the ink cartridge's ink sheet.
- After an ink cartridge is used up, replace it with a new one. Never try to reuse an ink cartridge.
- Do not remove the label affixed to the ink cartridge.
- If the ink cartridge seems to catch part way into the printer, take up the slack a bit more and try again.

Storing Ink Cartridges

When an ink cartridge is removed from the printer, seal it in the bag it came packed in when you purchased it. Store ink cartridges in a place that is not subjected to high temperature and humidity, large amounts of dust, or direct sunlight.

Connecting to a QV Digital Camera

Use the Communication Cable that comes with the printer to connect to a QV Digital Camera.

Important!

- Make sure that the power of the printer, the QV Digital Camera, and all other peripheral devices is turned off before connecting or disconnecting.
- Use only the AC Adaptor specified for the printer.

Note

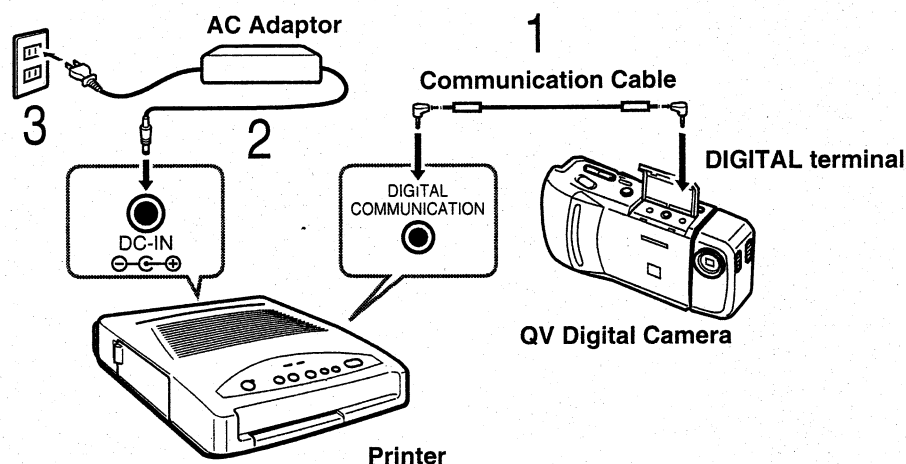
- Use of the QV Digital Camera's AC adaptor rather than battery power is recommended to power the camera.

To connect to a QV Digital Camera

1. Connect the SB-62 Communication Cable to the printer and the QV Digital Camera.
2. Connect the printer's AC Adaptor to the printer.
3. Plug the printer's AC Adaptor into a wall outlet.

Important!

- Be sure to use a standard household outlet that supplies power for which your AC Adaptor is rated.



Turning Power On and Off

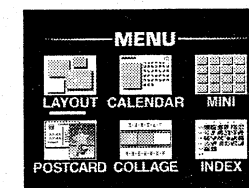
Make sure you connect the printer to the QV Digital Camera before turning on power.

Note

- Use of the QV Digital Camera's AC adaptor rather than battery power is recommended to power the camera.

To turn power on

1. Set the QV Digital Camera's Function switch to [PLAY], and then turn on the camera. It may take a few moments before an image appears, so be sure to wait before proceeding.
2. Press the printer's [POWER] button.
 - The POWER indicator flashes green to indicate that the printer is initializing. The indicator stops flashing (and remains lit) after initialization is complete.
 - The QV indicator flashes when communication with the QV Digital Camera is being performed. The indicator stops flashing (and remains lit) after the printer finishes checking camera memory contents.
 - Printer operation can be performed after the menu appears on the monitor screen of the QV Digital Camera. It may take a few seconds before the menu appears.



Menu screen

To turn power off

1. Press the printer's [POWER] button.
 - The POWER indicator goes off.
2. Turn off the QV Digital Camera.

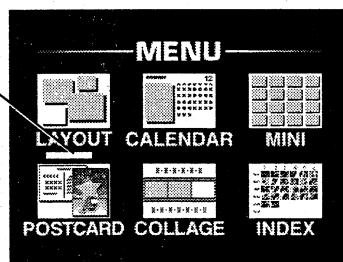
Menu Operations

Most operations of this printer are performed using button operations to select items from menus that appear on the QV Digital Camera's monitor screen. Note that all QV Digital Camera button operations are disabled when this printer is connected to the camera.

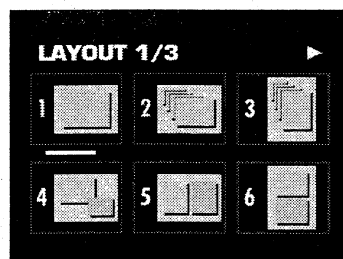
To select a menu item

1. Use [-] and [+] to move the cursor to the item you want to select.

Cursor
[LAYOUT] is currently selected on this menu.



2. Press [SET].



The display changes to the screen for the selected item. Some items display another menu screen. Use [-] and [+] again to select the item you want and press [SET].

To exit an operation

Press [MENU] to return to the menu from which the operation was selected.

To return to the previous operation

Press [BACK] to return to the operation immediately preceding the one that is currently on the display.

Inserting Paper Into the Printer

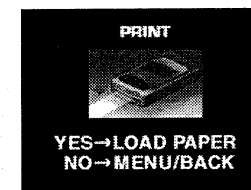
The print confirmation screen appears after you select an image and format for printing. Insert paper into the printer at this time. After inserting the leading edge of the paper into the printer, press [SET] to start printing.

→ See page E-10 for information about paper.

Note

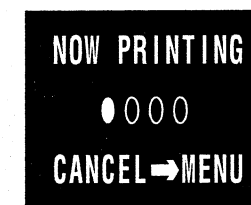
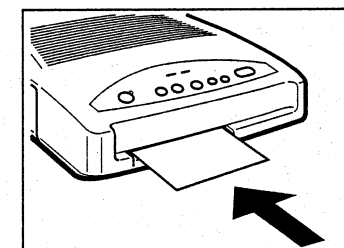
Use one of the followings to abort a print operation.

- Press [BACK] to return to the screen just before the current screen.
- Press [MENU] to return to the menu screen.



To insert paper into the printer

1. Insert the paper into the printer's paper inlet slot, with the leading edge of the paper first.
 - Gently insert the paper into the printer. After a while, the printer will take over and feed the paper automatically.
 - The start of printing causes message shown to the right to appear on the camera's monitor screen. If this message does not appear, remove the paper and reinsert.
 - The POWER indicator is orange while a printing operation is in progress.
 - Data transfer from the camera to the DP-8000 is performed in three separate blocks. Never turn off printer or camera power until printing is complete.



2. The monitor screen returns to the print confirmation screen after the print operation is complete.
 - After printing is complete, remove the printed paper and press the [MENU] button.
 - To continue printing, remove the printed paper and insert a new piece of paper through the paper inlet.

Printing on Postcards

Insert the optional special postcard so the address side is facing down. Insert the stamp end first.

To abort a printing operation

Press the [MENU] button to return to the menu screen. The printer may require a few seconds to return to a menu from an aborted printing operation.

Paper

The special paper that comes with the printer or special paper separately purchased as an option can be used with this printer. No other paper can be used.

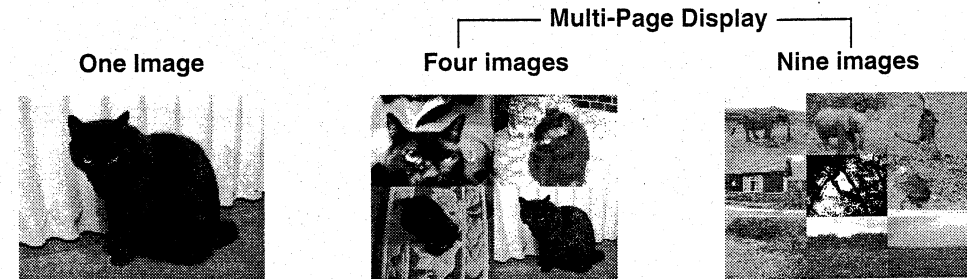
- Never use paper that is creased or badly bent. Doing so can result in paper jam or malfunction.

Print Storage Precautions

- Do not affix cellophane tape to a printed image, and do not allow contact with a plastic eraser, desk mat, or other item that is made of plastic.
- Do not allow printed images to come into contact with alcohol or any other volatile liquids.
- Store printed images in a location that it is not exposed to direct sunlight, high temperatures and humidity, and large amounts of dust.
- Do not stack prints together, or with paper or other items for long periods. Doing so can cause printed colors to transfer from printed images to other paper.
- Sweat and oil can cause discoloration of prints. Avoid touching printed images with your fingers.

Easy Printing

Use Easy Printing when you want to print an image as it is, without changing it. You can print a single image, or you can use the QV Digital Camera's Multi-Page Display to print four or nine images at the same time.



To print a single image

1. Press the [EASY] button until the 1-image display appears.
 - The [EASY] button is disabled while a print operation is in progress.

Page number
(indicates the sequential number of the image.)



Important!

- The appearance of the page number differs according to QV Digital Camera Model. See the User's Guide that comes with your camera for details on how it displays page numbers.
2. Use the [-] and [+] buttons to select the image you want to print.
 - Holding down [-] or [+] scrolls through images at high speed. During high-speed scrolling, the image area is black and only the image number scrolls

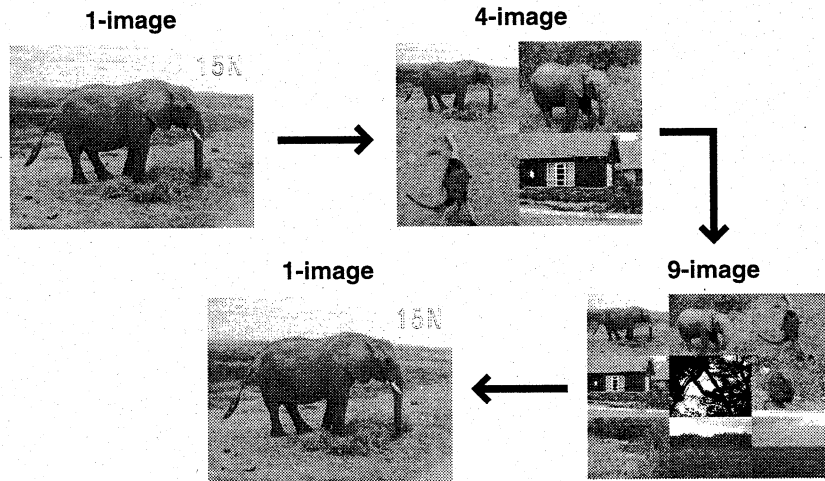


Press [SET] when the image you want to print is on the monitor screen.

3. When the print confirmation screen (E-9) appears, insert paper into the printer's inlet slot to start printing.

Changing the Monitor Screen Format

Each press of the [EASY] button cycles through display formats in the sequence: 1-image, 4-image, 9-image.



Each press of [EASY] changes the display format as shown here.

To print multiple images

- Use the [EASY] button to display the 4-image or 9-image format.
 - The 4-image and 9-image display formats do not include page numbers.



- Use the [-] and [+] buttons to select the images you want to print.
 - Images scroll four or nine at a time.
 - Holding down [-] or [+] scrolls through images at high speed.



Press [SET] when the images you want to print are on the monitor screen.

- When the print confirmation screen (E-9) appears, insert paper into the printer's inlet slot to start printing.

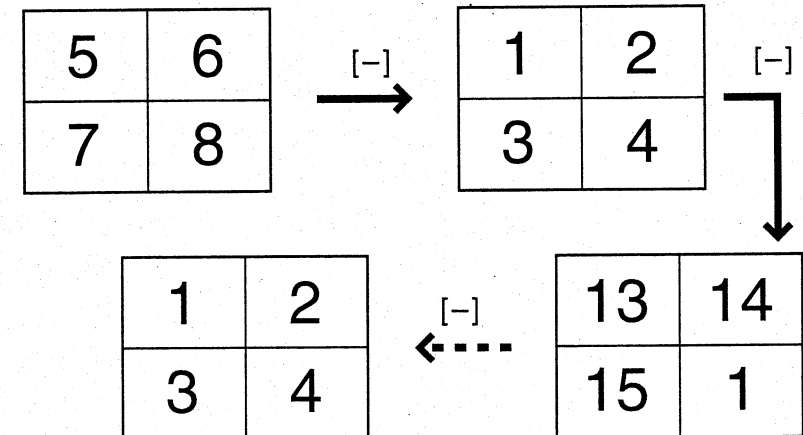
4-image and 9-image Scrolling

The following shows multiple images scroll on the display when you press the [-] and [+] buttons.

Example: 4-image display

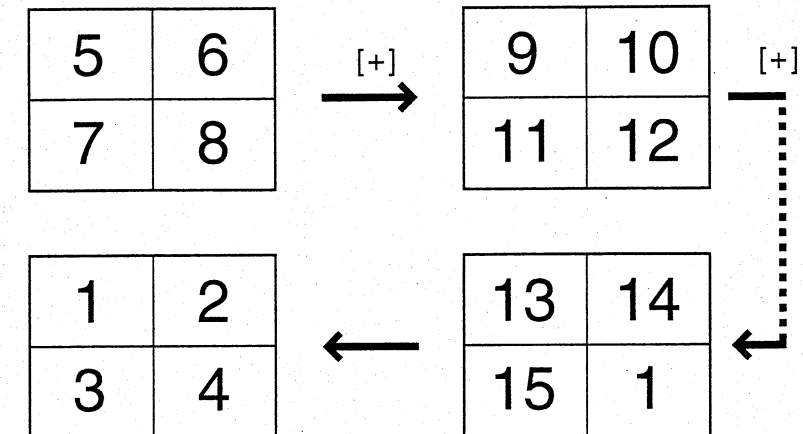
The following example assumes there are 15 images in memory, and you are starting from image number 5.

Back



The upper left corner is always image number 1.

Forward



The upper left corner is always image number 1.

A 9-image display scrolls in the same way.

Layout Printing

This section describes how you can incorporate your images into one of the 18 available preset layouts that provide backgrounds and data. Note that not all of the layouts include background and data, and the actual elements that make up a layout depend on the layout you choose.

→ See page E-20 for information about patterns.

Example:

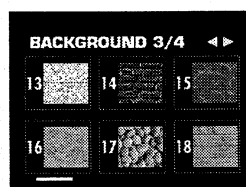
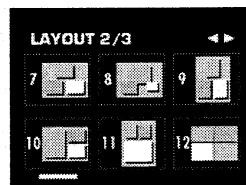
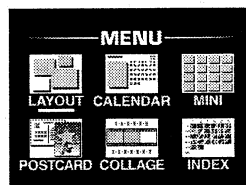


Note

- Up to 10 characters (letters, numbers, or symbols) can be input into the lower right of the image. This can be used for dates, numbers, etc.
- Press the [MENU] button to display the menu.

To perform layout printing

1. Use the [-] and [+] buttons to select [LAYOUT], and then press [SET].
2. Use the [-] and [+] buttons to select the pattern you want to use and then press [SET].
 - Here we will select Pattern 10.
 - If the pattern you selected in step 2 has a background, advance to step 3. If the pattern does not have a background, jump to step 4.
3. Use the [-] and [+] buttons to select a background and then press [SET].
 - Here we will select Background 16.



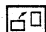
4. Use the [-] and [+] buttons to select the first image you want to use and then press [SET].
 - If the pattern you selected in step 2 uses a rotated image, advance to step 5. If the pattern does not have a rotated image, jump to step 6.

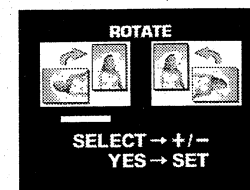


QV-10, QV-10A, QV-11, QV-30

Use the [-] and [+] buttons to select the first image you want to use and then press [SET].



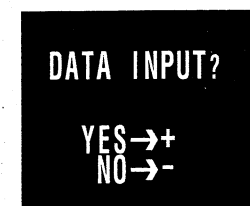
5. Use [-] and [+] to select the rotation direction and then press [SET].
 - Here we will select .
 - This setting determines whether the left side or the right side of the image will be up.



6. Repeat steps 4 and 5 for each of the images in the layout.

If the pattern you selected in step 2 includes data, perform steps 7 through 9. If the pattern does not include data, jump to step 10.

7. Press [+] if you want to input data.
 - If you do not want to input data, press [-] and jump to step 10.



8. Use the [-] and [+] buttons to select the character you want, and then press [SET] to advance to the next input position. To move back to an input position, press [BACK]. Repeat this step for all 10 input positions.

- Pressing [+] scrolls forward through characters in the sequence noted below, while [-] scrolls back.

[] → [1] → [2] → ... → [0]

↑ ['] ← [/] ← [-] ←

- Note that you must use all 10 input positions. Input blank spaces for any unused input position.

9. The data is registered when you press [SET] to register the input at the 10th input position.

10. After the print confirmation message (E-9) appears on the monitor screen, insert paper into the printer's paper inlet slot to start printing.

DATA INPUT
(1 _)
SELECT → + / -
NEXT → SET

Calendar Printing

The procedure described here lets you incorporate images into calendars for specific months and years. Calendars can be created within the range of January 1996 through December 2010.

→ See page E-20 for information about patterns.

Example:

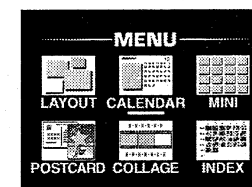


Note

- Press the [MENU] button to display the menu.

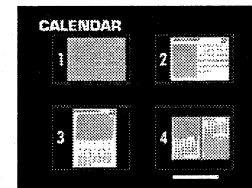
To perform calendar printing

1. Use the [-] and [+] buttons to select [CALENDAR], and then press [SET].



2. Use the [-] and [+] buttons to select the format you want to use and then press [SET].

- Here we will select Format 4.



3. Use steps 4 through 6 on page E-12 to select the image you want to incorporate into the calendar.

4. Use the [-] and [+] buttons to select a year and then press [SET].

- Here we select 1997.
- Each press of [-] or [+] scrolls forward or back through the years in the following sequence.

→ [1996] → [1997] → ... → [2010] →

YEAR
(1997)
SELECT → + / -
YES → SET

5. Use the [-] and [+] buttons to select a month and then press [SET].

- Here we select 6 (June).
- Each press of [-] or [+] scrolls forward or back through the months in the following sequences.

[1]→[2]→[3]→
 ↑ [12]←

6. After the print confirmation message (E-9) appears on the monitor screen, insert paper into the printer's paper inlet slot to start printing.

Note

- This printer does not print holidays in red.



Postcard Printing

A total of eight different formats are available to let you include your original images into postcards for all occasions. You can also use the printer's built-in calendar to input years within the range of 1996 to 2010.

Important!

- Use only the optional special post cards specified for use with this printer.

- See page E-10 for information about paper.
 See pages E-20, 21 for information about patterns.

Example:

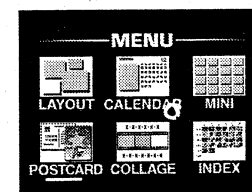


Note

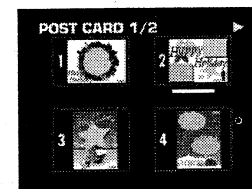
- Press the [MENU] button to display the menu.

To perform Postcard printing

1. Use the [-] and [+] buttons to select [POSTCARD], and then press [SET].



2. Use the [-] and [+] buttons to select the pattern you want to use and then press [SET].
 - Here we will select Pattern 2.

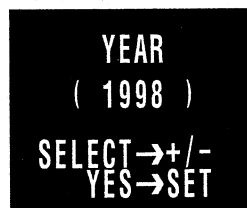


3. Use steps 4 through 6 of the procedure under "To perform layout printing" on page E-12 to select the images you want.

4. Use the [-] and [+] buttons to select the year and then press [SET].

- Here we select 1998.
- Each press of [-] or [+] scrolls forward or back through the years in the following sequence.

→[1996]→[1997]→...→[2010]



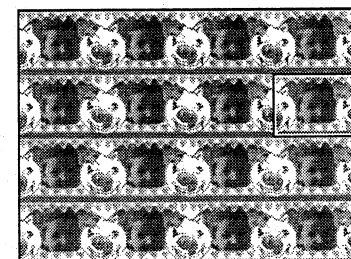
5. After the print confirmation message (E-9) appears on the monitor screen, insert a postcard into the printer's paper inlet slot to start printing.

Mini Printing

The Mini Printing feature of this printer provides a selection of 11 patterns that you can use to print up to 16 copies of an image with a single operation. If you use the optional 16-image sticker paper, you can create mini stickers using your own original images.

- See page E-22 for information about options.
See page E-21 for information about Mini Printing patterns.

Example:



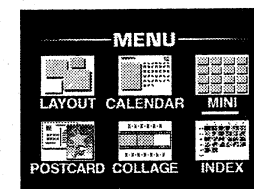
Each image measures
20.5 × 27 mm.

Note

- Press the [MENU] button to display the menu.

To perform mini printing

1. Use the [-] and [+] buttons to select [MINI], and then press [SET].



2. Use the [-] and [+] buttons to select the pattern you want to use and then press [SET].

- Here we will select Pattern 8.
- Select 12 if you do not want to use any ornamental pattern.



3. Use the [-] and [+] buttons to select the image you want to print and then press [SET].
4. After the print confirmation message (E-9) appears on the monitor screen, insert paper into the printer's paper inlet slot to start printing.

Collage Printing

This function lets you combine images with four different illustrations to create interesting effects.

→ See page E-21 for information about patterns.

Example:

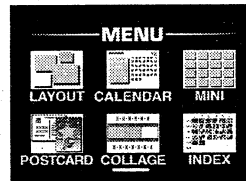


Note

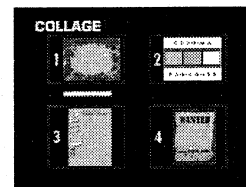
- Press the [MENU] button to display the menu.

To perform collage printing

1. Use the [-] and [+] buttons to select [COLLAGE], and then press [SET].



2. Use the [-] and [+] buttons to select the illustration you want to use and then press [SET].
 - Here we will select Illustration 1.

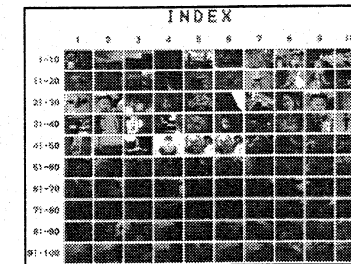


3. Use steps 4 through 6 of the procedure under "To perform layout printing" on page E-12 to select the images you want.
4. After the print confirmation message (E-9) appears on the monitor screen, insert paper into the printer's paper inlet slot to start printing.

Index Printing

With Index Printing, you can print an index that shows thumbnails of all images currently stored in QV Digital Camera memory. 100 thumbnails are printed per sheet of paper.

Example:



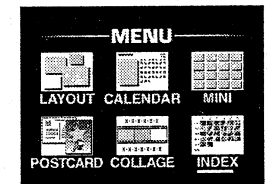
The index is 10 images by 10 images.

Note

- Press the [MENU] button to display the menu.

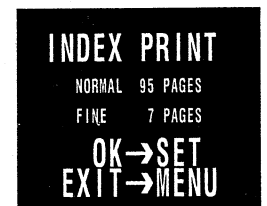
To perform index printing

1. Use the [-] and [+] buttons to select [INDEX], and then press [SET].

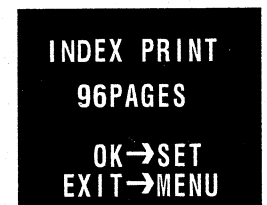


2. When the index printing confirmation screen appears, press [SET] to confirm that you want to print an index.

- The confirmation screen also indicates how many images are in QV Digital Camera Memory.



QV-10, QV-10A, QV-11, QV-30



3. After the print confirmation message (E-9) appears on the monitor screen, insert paper into the printer's paper inlet slot to start printing.
 - The menu reappears on the monitor screen after printing is complete.

When there are more than 100 images in camera memory

The print confirmation screen reappears after the first page of 100 images is printed. Insert another sheet of paper into the printer's paper inlet slot to continue printing.

You can use either of the following procedures to terminate printing part way through.

- Press [BACK] to move back to the previous screen.
- Press [MENU] to display the menu.

Troubleshooting

Anytime the printer locks up or fails to operate properly, check the status of the indicator and then refer to the following items to determine the problem and the necessary action. See page E-19 for information on error messages.

Power Supply Problem

POWER indicator does not light.	
Possible Cause	Recommended Action
AC adaptor is not connected correctly.	Reconnect the AC adaptor correctly and try again. See page E-8.

Problem During Printing

Printing stopped and POWER indicator flashing orange	
Possible Cause	Recommended Action
Overheating due to continuous printing	Wait for the printer to cool, indicated when the POWER indicator stops flashing. Printing will resume automatically.

Printing stopped and POWER indicator flashing red	
Possible Cause	Recommended Action
Incorrect paper thickness, quality, size, etc.	Remove the paper and change to the special paper specified for this printer. See page E-10.

Printing is poor quality due to scratching, smudging, missing parts, etc.	
Possible Cause	Recommended Action
Dirty printer head	Clean the printer head. See page E-19.

Problem During Operation

QV indicator goes out.	
Possible Cause	Recommended Action
QV Digital Camera power is turned off.	Turn on the QV Digital Camera. Next, turn off the printer and then turn it back on again.
Improper communication cable connection.	Turn off the printer and camera and connect the communication cable correctly. See page E-8.

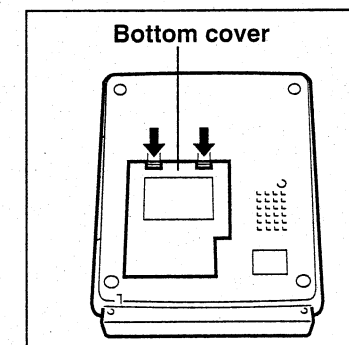
POWER indicator flashing red	
Possible Cause	Recommended Action
No ink cartridge loaded	Load an ink cartridge into the printer. See page E-7.
Ink cartridge is used up.	Replace the ink cartridge with a new one. See page E-7.
Ink cartridge problem	Replace the ink cartridge with a new one. See page E-7.
Ink cartridge compartment cover is open.	Close the cover.
Bottom cover is open.	Close the cover.

POWER indicator lights red	
Possible Cause	Recommended Action
Paper jam	Remove the jammed paper and try inserting again.
Dead QV Digital Camera batteries	Replace QV Digital Camera batteries or switch to AC Adaptor power.
<ul style="list-style-type: none"> Communication cable not connected correctly Damaged or loosely connected communication cable 	Make sure the communication cable is connected correctly and try again. If the problem persists, contact your original dealer.
Internal printer mechanism problem	Unplug the AC adaptor from the power outlet and contact your original dealer.

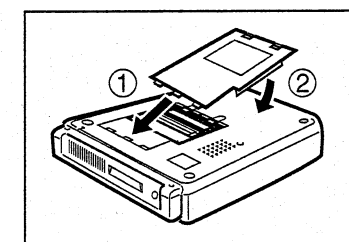
Clearing a Paper Jam

A paper jam is indicated by an error code (11 or 12) on the monitor screen of the connected QV Digital Camera. When a jam occurs, immediately turn off the printer and unplug its AC adaptor from the wall outlet. Next, use the following procedure to remove the jammed paper.

1. Open the printer's bottom cover.
 - Press the tabs in the direction indicated by the arrows to release the cover.



2. Pull out the jammed paper by hand.
3. Replace the cover.
 - Insert the tabs on the bottom edges of the bottom cover in the direction indicated by the arrow, and then swing the cover down into place. Press down on the bottom cover until it locks into place with a click.



Error Messages

Printer problems are indicated by error codes that appear on the monitor screen of the connected QV Digital Camera, as shown here. Take the corrective actions described in the table below whenever an error code appears.

ERROR (00)

Error code

Error Code	Cause and Required Action
11 12	Paper jam. Remove the jammed paper and print again.
21	Bottom cover open. Close the cover.
22	Ink cartridge compartment cover open. Close the cover.
41 42 43	Internal printer mechanism problem. Unplug the AC adaptor from the power outlet and contact your original dealer.

Other problems are indicated by error messages, whose causes and required actions are described below.

Error Message	Cause and Required Action
CARTRIDGE	<ul style="list-style-type: none"> Ink cartridge is not loaded. Load an ink cartridge into the printer. Ink cartridge is used up. Replace the ink cartridge with a new one. Ink cartridge problem. Replace the ink cartridge with a new one.
PAPER	<ul style="list-style-type: none"> Incorrect paper thickness, quality etc. Use the special paper specified for this printer. Incorrect paper size. Use the correct size of paper.

User Maintenance

Important!

Be sure to turn off the printer, the QV Digital Camera, and any other connected peripherals before performing user maintenance.

Cleaning the Printer Exterior

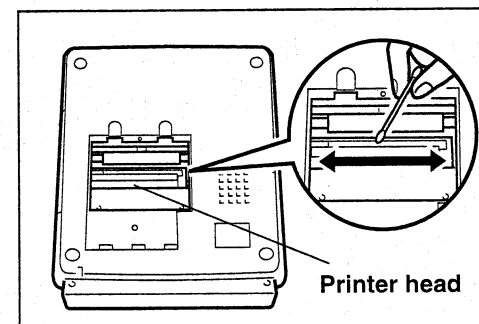
Clean the exterior of the printer using a soft cloth moistened with a weak solution of water and a mild neutral detergent. Be sure to wring out all excess liquid from the cloth. Never use benzene, alcohol, thinner, or any other chemical agents for cleaning the printer exterior.

Cleaning the Printer Head

Poor print quality normally means that the printer head is dirty. When this happens, use the following procedure to clean the printer head.

1. Remove the ink cartridge from the printer.
2. Open the printer's bottom cover.
3. Gently wipe off the surface of the printer head and surrounding areas with a cotton swab moistened with alcohol.
4. Securely close the bottom cover.

- As a general rule of thumb, clean the printer head after every 100 prints.
- Make sure you do not touch the rubber rollers when cleaning the printer head.



Patterns

The number inside the layouts with images above are to indicate the sequence used for the selection of images to be included in each layout.

LAYOUT

Pattern	Elements
1	Background Image 1 Data
2	Background Image 1 Data
3	Background Image 1 (Vertical/ Horizontal) Data
4	Background Image 1, 2 Data
5	Background Image 1, 2 (Vertical/ Horizontal) Data
6	Background Image 1, 2 Data

Pattern	Elements
7	Background Image 1, 2, 3 Data
8	Background Image 1, 2, 3 Data
9	Background Image 1, 2, 3 (Vertical/ Horizontal) Data
10	Background Image 1 (Vertical/ Horizontal) Image 2, 3 Data
11	Background Image 1, 2 (Vertical/ Horizontal) Image 3 Data
12	Image 1, 2, 3, 4



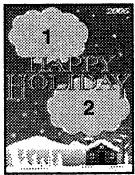
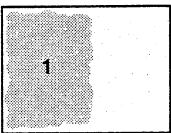
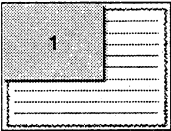

Pattern	Elements
13	Background Image 1, 2, 3, 4 Data
14	Background Image 1, 2, 3, 4 Data
15	Background Image 1, 2, 3, 4 Data
16	Background Image 1, 2, 3, 4 (Vertical/ Horizontal) Data
17	Image 1 to 9
18	Background Image 1 to 9 Data

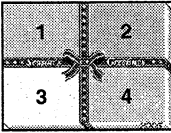
CALENDAR

Pattern	Elements
1	Image 1 Year, Month
2	Image 1 (Vertical/ Horizontal) Year, Month
3	Image 1 Year, Month
4	Image 1, 2 Year, Month

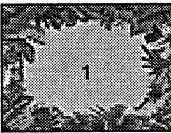
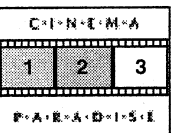
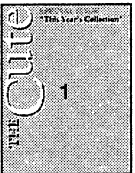
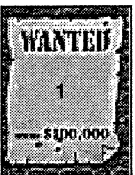
POSTCARD

Pattern	Elements
1	Image 1 Year

















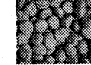







Pattern		Elements
2		Image 1, 2 Year
3		Image 1 Year
4		Image 1, 2 Year
5		Image 1 (Vertical/ Horizontal) Year
6		Image 1 Year
7		Image 1 Year

Pattern		Elements
8		Image 1, 2, 3, 4 Year













COLLAGE

Pattern		Elements
1		Image 1
2		Image 1, 2, 3
3		Image 1 (Vertical/ Horizontal)
4		Image 1

Backgrounds

1		2		3		4		5		6	
7		8		9		10		11		12	
13		14		15		16		17		18	
19		20		21		22		23		24	

MINI Patterns

1		2		3		4		5		6	
7		8		9		10		11		12	

Specifications

Printing System	Sublimation thermal line printer
Pixels	PC: 960 × 1920 dots (480 × 640 dots) QV Digital Camera: 480 × 640 dots
Resolution	PC: 297 × 446 dpi (149 × 149 dpi) QV Digital Camera: 149 × 149 dpi
Color	256 gradations, 16.77 million colors
Paper Size	100 × 148 mm (3 ¹⁵ / ₁₆ " × 5 ¹³ / ₁₆ ") (A6 size)
Print Size	82 × 109 mm (3 ¹ / ₄ " × 4 ¹⁵ / ₁₆ ")
Paper Feed	Manual
Input Terminals	DIGITAL terminal; Centronics standard bi-directional parallel port
Power	AC Adaptor (AD-2418); Rated Input: 24V
Power consumption	Approximately 53W
Number of Buttons	7
Functions	Easy Printing; background, calendar, post card, mini label, illustration printing directly from QV Digital Camera or personal computer
Maximum Dimensions	71.5(H) × 250(W) × 317(D) mm (2 ¹³ / ₁₆ "H × 9 ⁷ / ₈ "W × 12 ¹ / ₂ "D)
Weight	2.3 Kg (5lbs)
Operating Temperature	5°C to 35°C
Included Items	AC Adaptor (AD-2418); Communication Cable (SB-62); Ink Cartridge; Special Paper; Printer Driver for Windows; User's Guide; Printer Driver User's Guide; Print Samples

Options

Special paper and ink cartridges designed for use with this printer are available as options. Ask your original dealer about the availability of options.

Paper Sets

- **QS-101 Standard Paper Set**
25 pieces of standard paper + one ink cartridge
- **QS-102 Standard Paper (Postcard Type) Set**
25 pieces of standard paper (postcards) + one ink cartridge
- **QS-201 Sticker Paper Set**
25 pieces of sticker paper + one ink cartridge
- **QS-202 16-image Sticker Paper Set**
25 pieces of 16-image sticker paper + one ink cartridge

This file has been downloaded from:

www.UsersManualGuide.com

User Manual and User Guide for many equipments like mobile phones, photo cameras, mother board, monitors, software, tv, dvd, and others..

Manual users, user manuals, user guide manual, owners manual, instruction manual, manual owner, manual owner's, manual guide, manual operation, operating manual, user's manual, operating instructions, manual operators, manual operator, manual product, documentation manual, user maintenance, brochure, user reference, pdf manual