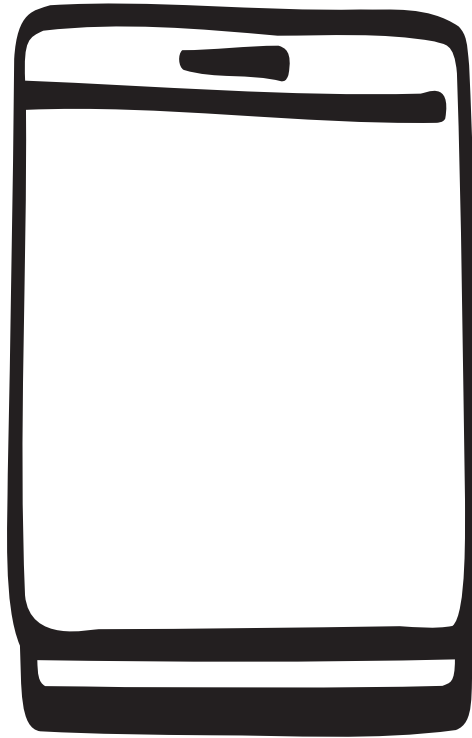


OPERATING AND INSTALLATION MANUAL

CHEST FREEZER



EC 1109N

GB

CONTENTS

TECHNICAL SPECIFICATIONS	2 page
SAFETY INSTRUCTIONS	3 page
Warnings and Guidelines	
Refrigerant	
Disposal	
INSTALLATION	4 page
Position	
Electrical connections	
Switching On	
HOW TO USE	5 page
Temperature Control	
Opening/Closing the Lid	
Control Panel	
Freezing	
Packaging and Positioning	
Capacity	
Baskets	
HELPFUL HINTS	6 page
Storage	
Freezing	
Defrosting	
MAINTENANCE	6 page
Defrosting	
How to Clean Your Freezer	
When Not in Use	
IF SOMETHING DOES NOT WORK	7 page
GUARANTEE CONDITIONS & SERVICE	8 page

TECHNICAL SPECIFICATIONS

Model		EC 1109N					
Volume (gross)	litres	105					
Volume (net)	litres	102					
Height without/with roller	cm	85,5/86,1					
Width	cm	55					
Depth	cm	55					
Weight	kg	33					
Energy consumpt./24h	kWh	0,75					
Freezing capacity	kg/24h	12					
Hold-over time	hours	18					
Rated power	W	85					

CE this appliance complies with the following EC Directives:

- 73/23/EEC of 19. 02. 1973 - Low-Voltage Directive

- 89/336/EEC of 03. 05. 1989 (including Amendment Directive 92/31/EEC - EMC Directive.

Some of the models are not available in all countries.

Testing has been carried out in accordance with ISO 5155 regarding the determination of freezer capacity, energy consumption and hold-overtime.

Information for test institute: A plan of the positioning of test packages may be obtained directly from the manufacturer.

SAFETY INSTRUCTIONS

WARNINGS AND GUIDELINES

These warnings are provided to improve safety, and should be read carefully before installing or using your freezer.

IMPORTANT

It is vital that these instructions are kept with the freezer for future use. If the freezer is sold or given to another user, or if you move and leave the freezer behind, you must ensure that the instructions accompany the freezer to enable the next user to use the freezer correctly and read the relevant warnings.

- This freezer is only intended for the freezing and storage of food.
- This freezer should only be operated by adults. Children must not be allowed to tamper with the control knobs or play with the freezer.
- Changes in the electrical mains system in connection with the installation of this freezer should always be carried out by an authorised electrician or competent person.
- Do not under any circumstances attempt to repair the freezer yourself. Repairs carried out by untrained people may result in personal injury or serious malfunction of the freezer.
- Service of the freezer should be carried out by an authorised service company, and only original spare parts should be used. See under "Guarantee Conditions and Service".
- It is dangerous to alter the freezer specifications, or to change the freezer in any other way.
- Make sure that the freezer is not placed on top of the mains cable.
- Do not re-freeze food once it has been defrosted.
- Observe the recommendations for storage carefully. See under "Helpful Hints".
- This freezer includes components that are heated during operation. Consequently, adequate ventilation must always be provided. If ventilation is insufficient defects may occur, resulting in the loss of food. See under "Installation".
- The inside of the freezer contains pipes through which coolant flows. If these pipes are punctured the freezer may be damaged beyond repair, and food may be lost. Do not use sharp implements to remove frost or ice. Frost can be removed using the enclosed scraper. Do not knock ice off the sides of the freezer, but remove it by defrosting the freezer. See under "Maintenance".
- Do not place drinks in the freezer. Bottles and cans containing carbonic acid or sparkling drinks are particularly prone to explosion, which may damage the freezer.
- This freezer is heavy. Take care when moving it.
- If the freezer is fitted with a lock to prevent tampering by children, the key must always be kept safely out of the reach of children, and far away from the freezer.
- Before disposing of an old freezer, make sure that the lock (if present) no longer works. This is to prevent accidents and avoid the danger of children getting locked inside.
- Ice lollies can cause frostbite if eaten direct from the freezer.

IN THE INTERESTS OF THE ENVIRONMENT:

When disposing of your old fridge, freezer or fridge/freezer:

Check with your local Council or Environmental Health Officer to see if there are facilities in your area for collecting the gas from the appliance for recycling. This will help reduce the amount of CFC gas released into the atmosphere.

Help to keep your country tidy - when disposing of an old appliance or a CFC free appliance use an authorised disposal site.

REFRIGERANT

Your appliance contains an environmental friendly gas called R134a.

DISPOSAL

Appliance Packaging Information

All materials are environmentally sound! They can be dumped or burned at an incinerating plant without danger!

About the materials: The plastics can be recycled and are identified as follows:

>PE< for polyethylene, e.g. the outer covering and the bags in the interior.

>PS< for polystyrene foam, e.g. the pads, which are all free of chlorofluorocarbon.

The carton parts are made from recycled paper and should be disposed of at a waste-paper recycling collection location.

Disposal of old Appliances

For environmental reasons, refrigeration appliances must be disposed of properly. This applies to your old appliance, and -at the end of its service life- for your new appliance as well.

Warning!

Before disposing of old appliances make them inoperable. Remove plug from mains, sever the power cable, remove or destroy any snap or latch closures. This eliminates the danger that playing children lock themselves into the appliance (danger of suffocation!) or place themselves into other life-endangering situations.

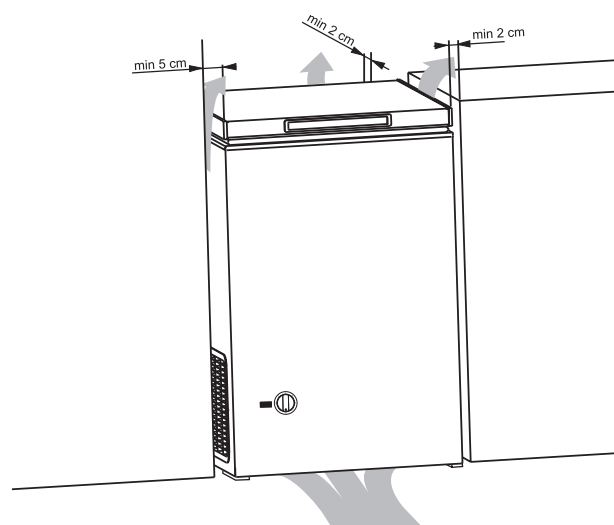
Disposal

- The appliance may not be disposed of with domestic waste or bulky refuse.
- The refrigerating circuit may not be damaged.
- Information concerning collection schedules or locations can be obtained from the disposal authorities or town hall.

INSTALLATION

POSITION

- Place the freezer horizontally on a firm surface, resting on all four plastic feet. Use a wooden block or similar object to compensate for any bumps/holes in the surface.
- The room should be dry and adequately ventilated.
- If the room temperature exceeds 32°C, or falls below freezing point, the freezer will not function as it should.
- Do not place the freezer close to sources of heat, radiators, chimneys, etc., and do not place the freezer in direct sunlight.
- If the freezer has been handled standing on end it should be allowed to stand in normal position for about 12 hours before switching it on.
- Please ensure that when the appliance is installed it is easily accessible for the engineer in the event of a breakdown.

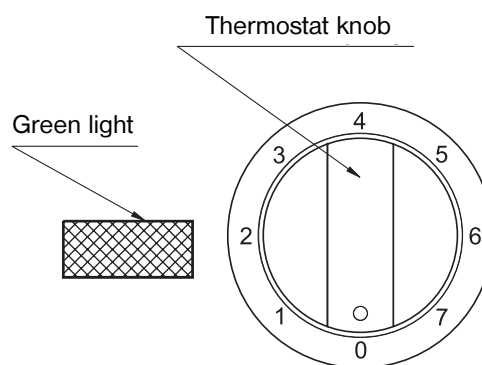


SWITCHING ON

Before switching on, the freezer should be cleaned inside. See under "Maintenance".

Set the thermostat knob in middle position. Allow the freezer to run for several hours before placing food inside.

The green light is illuminated as long as the freezer is connected.



ELECTRICAL REQUIREMENTS

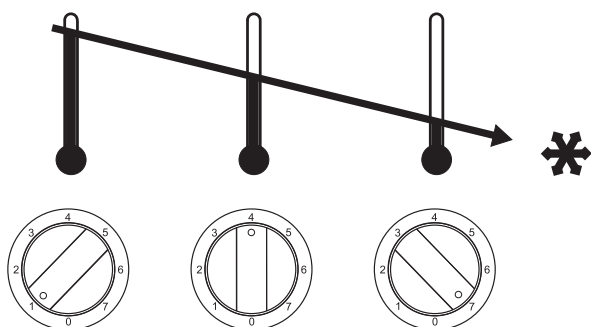
Before switching on, make sure that the voltage of your electricity supply is the same as that indicated on the rating plate, located inside the lid.

Warning:
This appliance must be earthed.

HOW TO USE

TEMPERATURE CONTROL

The thermostat ensures that the required temperature is maintained in the freezer. Turning the thermostat knob towards no. 7 makes the temperature in the freezer colder, and turning the knob towards no. 1 makes the temperature warmer. The correct setting can be found by measuring the temperature of the top package in the middle of the freezer. This should not have a temperature higher than -18°C .



OPENING/CLOSING THE LID

The lid is fitted with a tightly closing sealing strip to prevent moisture getting inside the freezer and increasing the amount of frost formed.

When the lid is opened the air inside the freezer becomes slightly warmer and expands.

As soon as the lid is closed again the air is cooled immediately.

This may lead to the creation of a vacuum which makes it hard to open the lid immediately after it has been closed. This is quite normal.

Wait a few minutes until the vacuum has disappeared, then open the lid by pulling gently. Never pull the handle violently.

FAST FREEZING

It is important that fresh food placed in the freezer is frozen quickly, and that the food already in the freezer is heated as little as possible.

If more than 3-4 kg of food is to be frozen:

- Turn the thermostat knob to the coldest setting ("7"). The freezer will now run continuously, creating a sufficient reserve of the temperature required.
- Turn the thermostat knob 6-24 hours before placing new food in the freezer, depending on how much food is to be frozen.
- Place the food in the freezer and leave the thermostat set at "7." for about 24 hours more.
- Then turn the thermostat knob back again. The freezer will return to normal storage temperature. If you forget to turn the thermostat knob back, the freezer will not be damaged by running at this setting for some time - but energy will be wasted.

PACKAGING AND POSITIONING

- Food must be cold before freezing (no more than room temperature).
- Food must be packed in airtight and moisture-proof packaging to prevent it from drying out.
- Place fresh food for freezing close to the cold sides of the freezer, making sure that it is not in contact with the frozen food already in the freezer.
- Never fill the freezer to more than 5 mm below the top edge.

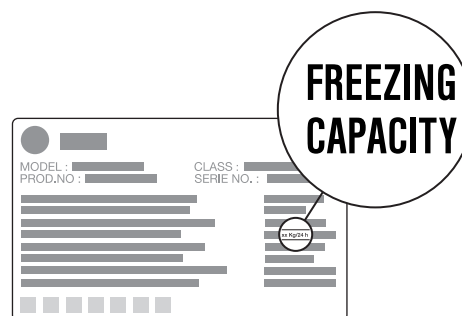
See under "Helpful hints".

CAPACITY

The freezing capacity of the freezer is stated in the data plate (kg/24 hours). Do not exceed the amount stated - if you do, the freezing time will be extended. The data plate is located inside the lid.

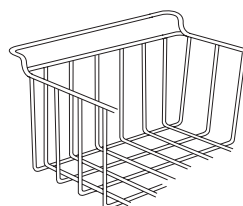
IMPORTANT

The freezing capacity stated can be utilised to the full occasionally to freeze large amounts of fresh food. However, if the freezer is filled with large amounts of food for freezing every day, the capacity stated is reduced by about one-third.



BASKETS

The baskets are designed for the storage of food which has already been frozen.



HELPFUL HINTS

STORAGE

Frozen food can be stored anywhere inside the freezer, but should be kept at least 5 mm below the top edge. Never exceed the maximum storage time for purchased frozen food. When you buy frozen food, make sure that it has been stored at the correct temperature. Do not buy products which have wet or damaged packaging. Place purchased products in your freezer as quickly as possible. We recommend using an insulated bag to bring such products home with you. Never place bottles, warm objects, or fizzy drinks in the freezer.

FREEZING

Only use fresh food of the best quality. Cool hot dishes to room temperature as quickly as possible before placing them in the freezer. Wrap food carefully in freezer foil, or use the special freezer boxes or bags which are on the market. Divide food into small portions before freezing - this ensures that freezing is more rapid, and means that you only need to defrost the amount needed for immediate consumption. Remember that defrosted food must not be re-frozen. However, dishes which have been made using defrosted food may be frozen. Mark the freezer packaging with the date of freezing. We recommend keeping a record

of the contents of your freezer. If freezing is too slow, the quality of the food being frozen deteriorates. Consequently, do not freeze larger amounts than stated in the freezer's data plate. If you wish to freeze food several days in a row, the maximum freezing capacity stated per day is reduced by about one-third. As far as possible, keep the lid closed during freezing. If you know nothing about home freezing, we recommend that you purchase a book containing advice and guidelines.

DEFROSTING

In general food should not be defrosted at room temperature, since this increases the risk of bacteria growth. It is best to defrost large portions of meat or poultry in the refrigerator, and this also applies to food which is to be consumed as it is (e.g. fruit, butter and sliced meat). Small portions of food can be cooked straight from the freezer. A good number of ready-to-cook dishes can also be cooked without defrosting. Always observe the instructions on product packaging. Bread tastes good when defrosted in a moderate oven. Microwave ovens can be used for the rapid defrosting of most frozen foods. Observe the instructions for use of the microwave oven concerned.

MAINTENANCE

DEFROSTING

The formation of frost on the inside of freezers cannot be avoided. Frost is formed when moisture contained in the air comes into contact with the cold surfaces of the freezer.

Consequently, the lid should only be opened when necessary, and it should never be left open.

A thin layer of ice or frost does not affect the function of the freezer adversely, and can be removed carefully using the scraper provided.

IMPORTANT

Never use a knife or any other sharp implement to remove frost.

When the frost or ice layer is 10-15 mm thick, the freezer should be defrosted. We suggest that you defrost your freezer when there is little or no food inside.

Switch off the current. Remove the contents of the freezer, wrap them in newspapers, and leave them in a cold place.

The speed of defrosting can be increased by placing one or more bowls of hot (not boiling) water inside the freezer and closing the lid. Open the lid after a while, and remove the layer of ice carefully.

Do not try to speed up defrosting by using anything other than hot water, since this may damage the freezer. After defrosting, clean the inside of the freezer.

HOW TO CLEAN YOUR FREEZER INSIDE

Remove the plug from the mains socket, and remove all loose accessories before cleaning the freezer.

The best time to clean your freezer is after defrosting and before the electricity supply is connected again.

Use a damp cloth to clean your freezer. Use hot water, and a mild, non-aromatic cleaning agent.

After cleaning the freezer, clean the basket/baskets before replacing them.

IMPORTANT

Never use strong cleaning agents, scouring powder or strongly aromatic cleaning agents to clean your freezer inside, since this will damage the inside and leave a strong smell.

EXTERNAL CLEANING

Wash the outer cabinet with warm soapy water. Do NOT use abrasive products.

WHEN NOT IN USE

- Disconnect the appliance from the electricity supply.
- Remove all goods from the freezer.
- Clean the freezer as described above.
- Leave the lid slightly open.

IF SOMETHING DOES NOT WORK

IF YOUR FREEZER DOES NOT FUNCTION SATISFACTORILY

Check the following before calling for service staff:

Defect:	Check if:	Possible cause:	Action:
Freezer not cold enough	Green light not on	Plug not connected correctly	Check plug and socket
		Defect in switch or fuse	Check fuse, call electrician
		Power failure	Wait until current returns
	Green light on	Fresh food recently placed in freezer	Wait a couple of hours
		Lid open too long	Wait a couple of hours
	Green light on,	Thermostat set too warm	Set thermostat colder
Lot of frost and ice formed		Defrost freezer	
Too much frost formed	Lid does not close completely	Lid in contact with goods in freezer	Re-arrange goods, check that lid closes correctly
	Lot of moisture in the room	Moisture from washing machine, tumble-dryer, etc.	Move freezer to a room with less moisture, or air regularly
	Goods packed poorly	Lot of moisture from goods	Re-pack goods, see under "How to use"

If you are still unable to solve the problem, summon the assistance of authorised service staff.

Do not take any other steps. Incorrect procedure may cause personal injury or lead to additional defects.

It is quite normal for the freezer to seem warm on the outside occasionally, owing to the heat generated by the freezing process. This heat also helps to prevent the formation of moisture on the outside of the appliance which could cause rust.

If the freezer has been switched off briefly, the compressor may not start immediately when the current is re-connected. This is quite normal.

IN THE CASE OF A POWER FAILURE OR BREAKDOWN

The hold-over period mentioned in the "Technical Specification" section of this book refers to an estimated time the freezer temperature will take to rise to an unacceptable level for keeping frozen foods.

Providing the period of power failure or breakdown does not exceed the hold-over period there will be no risk of damage to the frozen food, providing you do not open the lid during this period.

If the freezer is only half full or the lid is opened this will reduce the hold-over time.

After the breakdown period you are recommended to check the condition of food to ensure it has not started to thaw. Frozen food must NOT be re-frozen once it has thawed out. The following guidelines should assist you.

Ice cream: Once thawed should be discarded.

Fruits & Vegetables: If soft should be cooked and used up.

Breads & Cakes: Can be re-frozen without danger.

Shellfish: Should be refrigerated and used up quickly.

Cooked Dishes: ie. casseroles should be refrigerated and used up.

Small Joints: Should be cooked and can then be re-frozen as cooked dishes.

Chicken: Should also be cooked and re-frozen as a cooked dish.

Service and Spare Parts

In the event of your appliance requiring service, or if you wish to purchase spare parts please contact your local Electrolux Service Force Centre by telephoning:

0870 5 929929

Your call will be routed the Service Force Centre covering your post code area.

For service in the **Republic of Ireland** contact
Electrolux
Long Mile Road
Dublin 12

Telephone: 01 4090752.

Before calling out an engineer, please ensure you have read the details under the heading 'Something Not Working?'.
When you contact the Service Centre you will need to give the following details:

When you contact the Service Centre you will need to give the following details:

1. Your name, address and post code
2. Your telephone number
3. Clear and concise details of the fault
4. The model and serial number of the appliance (found on the rating plate)
5. The purchase date

Customer Care Department

For general enquiries concerning your Tricity Bendix appliance or for further information on Tricity Bendix products, you are invited to contact our Customer Care Department by letter or telephone as follows:

Customer Care Department
Electrolux
55-77 High Street
Slough
Berkshire
SL1 1DZ

Tel: 08705 950950 calls to this number may be recorded for training purposes.

To contact your local Electrolux Service Centre telephone **08705 929 929**

CHANNEL ISLANDS		ORKNEY (M65)	<i>Corsie Domestic 7 King Street Kirkwall Orkney KW15</i>	NORTH EAST	
GUERNSEY	<i>Guernsey Electricity PO Box 4 Vale, Guernsey Channel Islands</i>	PERTH	<i>Hydro Electrical Inveralmond House Ruthervanfield Road Perth PH1 3AQ</i>	GATESHEAD (M39)	<i>Unit 356a Dukesway Court Dukesway Team Valley Gateshead NE11 0BH</i>
JERSEY	<i>Jersey Electricity Company PO Box 45 Queens Road St Helier Jersey Channel Islands JE4 8NY</i>	PERTH	<i>Graham Begg Unit 4 Airport Ind Estate Wick KW1 4QS</i>	GRIMSBY (M42)	<i>15 Hainton Avenue Grimsby South Humberside DN32 9AS</i>
SCOTLAND		(OWN SALES)		HULL (M41)	<i>Unit 1 Boulevard Industrial Estate Hull HU3 4AY</i>
ABERDEEN (M05)	<i>54 Claremont Street Aberdeen AB10 6RA</i>	SHETLAND (OWN SALES)	<i>Tait Electronic Systems Ltd Holmsgarth Road Lerwick Shetland ZE1 0PW</i>	LEEDS (M37)	<i>64-66 Cross Gates Road Leeds LS15 7NN</i>
AUCHTERMUCHY (M03)	<i>33a Burnside Auchtermuchy Fife KY14 7AJ</i>	SHETLAND (OWN SALES)	<i>Bolts Shetland Ltd. 26 North Road Lerwick Shetland ZE1 0PE</i>	NEWTON AYCLIFFE (M45)	<i>Unit 16 Gurney Way Aycliffe Industrial Estate Newton Aycliffe DL5 6UJ</i>
BLANTYRE (M07)	<i>Unit 5 Block 2 Auchenraith Ind. Estate Rosendale Way Blantyre G72 0NJ</i>	WHALSAY (OWN SALES)	<i>Leask Electrical Harisdale Symbister, Whalsay Shetland ZE2 9AA</i>	SHEFFIELD (M38)	<i>Pennine House Roman Ridge Ind. Roman Ridge Road Sheffield S9 1GB</i>
DUMFRIES (M01)	<i>93 Irish Street Dumfries Scotland DG1 2 PQ</i>	NORTHERN IRELAND		NORTH WEST	
DUNOON (M67)	<i>Brair Hill 7 Hill Street Dunoon Argyll PA23 7AL</i>	BELFAST (M27)	<i>Owenmore House Kilwee Business Park Upper Dunmury Lane Belfast BT17 0HD</i>	BIRKENHEAD (M11)	<i>1 Kelvin Park Dock Road Birkenhead L41 1LT</i>
GLASGOW (M04)	<i>20 Cunningham Road Clyde Estate Rutherglen Glasgow G73 1PP</i>	WALES		CARLISLE (M10)	<i>Unit 7 James Street Workshops James Street Carlisle Cumbria CA2 5AH</i>
INVERNESS (M06)	<i>Unit 3B Smithton Ind. Estate Smithton Inverness IV1 AJ</i>	CARDIFF (M28)	<i>Guardian Industrial Estate Clydesmuir Road Tremorfa Cardiff CF2 2QS</i>	ISLE OF MAN (M64)	<i>South Quay Ind. Estate Douglas Isle of Man IM1 5AT</i>
ISLE OF ARRAN (OWN SALES)	<i>Arran Domestic Unit 4 The Douglas Centre Brodict Isle of Arran KA27 8AJ</i>	CLYWD (M14)	<i>Unit 6-7 Coed – Parc Abergele Road Rhuddlan Clwyd Wales LL18 5UG</i>	LIVERPOOL (M15)	<i>Unit 1 Honeys Green Precinct Honeys Green Lane Liverpool L12 9JH</i>
ISLE OF BARRA (OWN SALES)	<i>J Zerfah 244 Bruernish Isle of Barra Western Islands HS9 5QY</i>	DYFED (M77)	<i>Maes Y Coed High Mead Llanybydder Carmarthenshire SA40 9UL</i>	MANCHESTER (M09)	<i>Unit B Central Industrial Estate St Marks Street Bolton BL3 6NR</i>
ISLES OF BUTE	<i>Walker Engineering Glenmhor Upper Serpentine Road Rothesay Isle of Bute PA20 9EH</i>	HAVERFORDWEST (M75)	<i>Cromlech Lodge Ambleston Haverfordwest Pembrokeshire SA62 5DS</i>	PRESTON (M13)	<i>Unit 250 Dawson Place Walton Summit Bamber Bridge Preston Lancashire PR5 8AL</i>
ISLE OF LEWIS	<i>ND Macleod 16 James Street Stornoway Isle of Lewis PA87 2QW</i>	OSWESTRY (M17)	<i>Plas Ffynnon Warehouse Middleton Road Oswestry SY11 2PP</i>	STOCKPORT (M16)	<i>Unit 20 Haigh Park Haigh Avenue Stockport SK4 1QR</i>
KELSO (M08)	<i>2-8 Wood Market Kelso Borders TD5 7AX</i>				



Electrolux Service Force



To contact your local Electrolux Service Centre telephone **08705 929 929**

MIDLANDS		LONDON & EAST ANGLIA		SUNBURY (M63)	Unit 1a The Summit Hanworth Road Hanworth Ind. Estate Sunbury on Thames TW16 5D
BIRMINGHAM (M18)	66 Birch Road East Wyrley Road Ind. Estate Witton Birmingham B6 6DB	BECKENHAM (M79)	11a Gardener Ind. Estate Kent House Lane Beckenham Kent BR3 1QZ	SOUTH EAST	
BOURNE (M44)	Manning Road Ind. Estate Pinfold Road Bourne PE10 9HT	CHELMSFORD (M47)	Hanbury Road Widford Ind. Estate Chelmsford Essex CM12 3AE	ASHFORD (M58)	Unit 2 Bridge Road Business Est. Bridge Road Ashford Kent TN2 1BB
BRIDGNORTH (M72)	68 St. Mary's Street Bridgnorth Shropshire WV16 4DR	COLINDALE (M53)	Unit 14 Capitol Park Capitol Way Colindale London NW9 0EQ	FLEET (M59)	Unit 1 Redsfield Ind. Estate Church Crookham Fleet Hampshire GU13 0RD
GLOUCESTER (M23)	101 Rycroft Street Gloucester GL1 4NB	ELTHAM (M78)	194 Court Road Mottingham Eltham London SE9 4EW	HAYWARDS HEATH (M55)	21-25 Bridge Road Haywards Heath Sussex RH16 1UA
HEREFORD (M31)	Unit 3 Bank Buildings Cattle market Hereford HE4 9HX	ENFIELD (M49)	284 Alma Road Enfield London EN3 7BB	SOUTH WEST	
HIGHAM FERRERS (M51)	30 High Street Higham Ferrers Northants NN10 8BB	GRAVESEND (M57)	Unit B4 Imperial Business Estate Gravesend Kent DA11 0DL	BARNSTAPLE (M30)	Main Road Fremington Barnstaple North Devon EX31 2NT
ILKESTON (M43)	Unit 2 Furnace Road Ilkeston DE7 5EP	HARPENDEN (M46)	Unit 4 Riverside Estate Coldharbour Lane Harpenden AL5 4UN	BOURNEMOUTH (M26)	63-65 Curzon Road Bournemouth Dorset BH1 4PW
LEICESTER (M22)	Unit 7 Oaks Ind. Estate Coventry Road Narborough Leicestershire LE0 5GF	LETCHWORTH (M50)	16-17 Woodside Ind. Estate Works Road Letchworth Herts SG6 1LA	BRIDGEWATER (M35)	6 Hamp Ind. Estate Bridgewater Somerset TA6 3NT
LINCOLN (M40)	Unit 8 Stonefield Park Clifton Street Lincoln LN5 8AA	LONDON (M76)	2/4 Royal Lane Yewlsley West Drayton Middlesex UB7 8DL	BRISTOL (M25)	11 Eldon Way Eldonwall Trading Bristol Avon BS4 3QQ
NEWCASTLE UNDER LYME (M12)	18-21 Croft Road Brampton Ind. Estate Newcastle under Lyme Staffordshire ST5 0TW	MAIDENHEAD (M60)	Reform Road Maidenhead Berkshire SL6 8BY	EMSWORTH (M33)	266 Main Road Southbourne Emsworth PO10 8JL
REDDITCH (M20)	13 Thornhill Road North Moons Moat Redditch Worcestershire B98 9ND	MOLESEY (M61)	10 Island Farm Avenue West Molesey Surrey KT8 2UZ	ISLE OF WIGHT (M34)	Unit 8 Enterprise Court Ryde Business Park Ryde Isle of Wight PO33 1DB
TAMWORTH (M19)	Unit 3 Sterling Park Claymore Tamworth B77 5DO	NEWBURY (M24)	9 Pipers Court Berkshire Drive Thatcham Berkshire RG19 4ER	NEWTON ABBOT (M29)	Unit 2 Zealley Ind. Estate Kingsteignton Newton Abbot S. Devon TQ12 3TD
WORCESTER (M73)	Units 1 & 2 Northbrook Close Gregorys Mill Ind. Estate Worcester WR3 8BP	IPSWICH (M48)	Unit 6C Elton Park Business Centre Hadleigh Road Ipswich IP2 0DD	REDRUTH (M36)	Unit 7D Pool Ind. Estate Wilson Way Redruth Cornwall TR15 3QW
		NORWICH (M52)	2b Trafalgar Street Norwich NR1 3HN		

Guarantee Conditions

We Electrolux undertake that if within 12 months of the date of the purchase this Electrolux appliance or any part thereof is proved to be defective by reason only of faulty workmanship or materials, the company will, at our option repair or replace the same FREE OF CHARGE for labour, materials or carriage on condition that:

- The appliance has been correctly installed and used only on the electrical supply stated on the rating plate.
- The appliance has been used for normal domestic purposes only, and in accordance with the manufacturer's instructions.
- The appliance has not been serviced, maintained, repaired, taken apart or tampered with by any person not authorised by us.
- All service work under this guarantee must be undertaken by a Electrolux Service Force Centre.
- Any appliance or defective part replaced shall become the Company's property.

Home visits are made between 8.30am and 5.30pm Monday to Friday. Visits may be available outside these hours in which case a premium will be charged.

EXCLUSIONS

This Guarantee does not cover:

Damage or calls resulting from transportation, improper use or neglect, the replacement of any light bulbs or removable parts of glass or plastic.

- Costs incurred for calls to put right an appliance improperly installed or calls to appliances outside the United Kingdom.
- Appliances found to be in use within a commercial environment, plus those which are the subject of rental agreements.
- Products of Electrolux manufacture which are not marked by Electrolux.

The guarantee is in addition to your statutory and legal rights.

Electrolux EUROPEAN GUARANTEE

If you should move to another country within Europe then your guarantee moves with you to your new home subject to the following qualifications:

- The guarantee starts from the date you first purchased your product.
- The guarantee is for the same period and to the same extent for labour and parts as exists in the new country of use for this brand or range of products.
- This guarantee relates to you and cannot be transferred to another user.
- Your new home is within the European Community (EC) or European Free Trade Area.
- The product is installed and used in accordance with our instructions and is only used domestically, i.e. a normal household.
- The product is installed taking into account regulations in your new country.

Before you move please contact your nearest Customer Care Centre, list below, to give them details of your new home. They will then ensure that the local Service Organisation is aware of your move and able to look after you and your appliances.

France	Senlis	+33 (0) 3 44 62 29 99
Germany	Nuremberg	+49 (0) 911 323 2600
Italy	Pordenone	+39 (0) 1678 47053
Sweden	Stockholm	+46 (0) 8 738 79 50
UK	Slough	+44 (0) 1753 219898

This file has been downloaded from:

www.UsersManualGuide.com

User Manual and User Guide for many equipments like mobile phones, photo cameras, mother board, monitors, software, tv, dvd, and othes..

Manual users, user manuals, user guide manual, owners manual, instruction manual, manual owner, manual owner's, manual guide, manual operation, operating manual, user's manual, operating instructions, manual operators, manual operator, manual product, documentation manual, user maintenance, brochure, user reference, pdf manual